

4

FITTINGS FOR OVERHEAD POWER LINES 110 kV

2024

1st EDITION



Bezpol

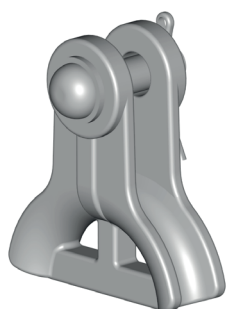


CONTENTS

1.1. CLAMPS	3
1.1.1. CLEVIS ANCHOR CLAMP WITH PIN (THIMBLE)	3
1.1.2. U-BOLT CLAMP USK TYPE	3
1.1.3. GROUNDING CLAMP FIXTURE RU	4
1.1.4. APG CLAMP 10-50	4
1.2. LINKS	5
1.2.1. SHACKLES WITH PIN	5
1.2.2. SHACKLES WITH HEX BOLT	6
1.2.3. SAG ADJUSTER PLATES	7
1.2.4. WHIPPLETREES	7
1.2.5. EXTENSION ROD LINKS	11
1.2.6. ADJUSTABLE EXTENSION LINKS	11
1.2.7. EXTENSION FLAT BAR LINKS	12
1.2.8. CLEVIS-YOKE LINKS WITH PIN	13
1.2.9. CLEVIS-YOKE LINKS WITH HEX BOLT	14
1.2.10. COMPLETE SCREW BOLT WITH SPLIT PIN	18
1.2.11. EXTENSION CLEVIS-CLEVIS LINKS	19
1.2.12. DOUBLE FLAT BAR LINKS	20
1.2.13. DOUBLE EYE LINKS	21
1.2.14. LINKS FOR INSULATOR FITTINGS	
DOUBLE EYE AND SINGLE EYE-BALL ENDED LINKS	23
1.2.15. TWO-SIDED BALL ENDED LINK ŁD 16/27	26
1.2.16. SOCKET-EYE LINKS	27
1.2.17. SPRING COTTER FOR SOCKET LINKS	27
1.3. INSULATOR FITTINGS	28
1.3.1. MIDDLE ARCING HORNS	28
1.3.2. ARCING RINGS	29
1.3.3. UPPER ARCING HORNS	32
1.3.4. ARCING HORNS	33
1.3.5. TWO-SIDED ARC PROTECTION FITTINGS	33
1.3.6. UPPER ARCING HORNS SINGLE-SIDED AND TWO-SIDED	34
1.4. CLAMPS AND SPLICES	35
1.4.1. SUSPENSION CLAMPS	35
1.4.2. COUNTERWEIGHT	37
1.4.3. COMPRESSION ANCHOR CLAMPS AND SUBSTATION ANCHOR CLAMPS	38
1.4.4. COMPRESSION SPLICES	39
1.4.5. COMPRESSION ANCHOR CLAMPS FOR HTLS CONDUCTORS	40
1.4.6. COMPRESSION SPLICES FOR HTLS CONDUCTORS	40
1.4.7. COMPRESSION LUGS	41
1.4.8. COMPRESSION LUG SETS	42
1.4.9. COMPRESSION LUG SETS	43
1.5. TOWER ATTACHMENTS	44
1.5.1. UNIVERSAL U-BOLT HANGER	44
1.5.2. COMPLETE HANGER	45
1.5.3. HANGER	45
1.5.4. HANGER WB I	45

1.1 CLAMPS

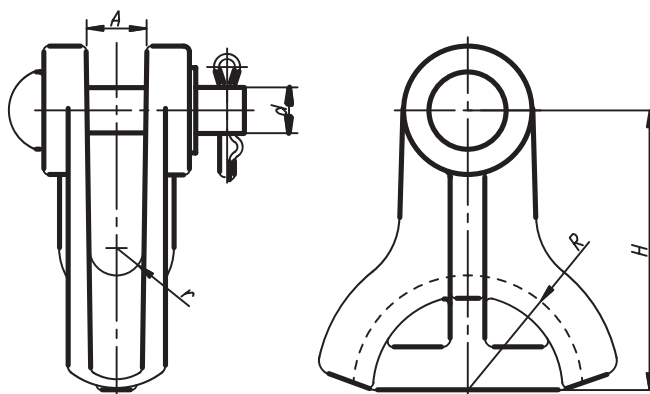
1.1.1 CLEVIS ANCHOR CLAMP WITH PIN (THIMBLE)



BK 3001/1

Material:

Hot dip galvanized steel

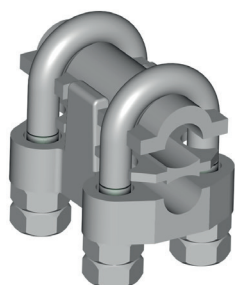


Applications:

The thimble anchor clamps are designed for installation of conductors on a tension insulator set.

Catalog No.	KTM	Conductor diameter range [mm]	Dimensions [mm]					Breaking load [kN]
			R	H	A	r	d	
BK 3001/1	1131-690-006-012	4.5 ÷ 19	40	97,5	21	9,5	16	70

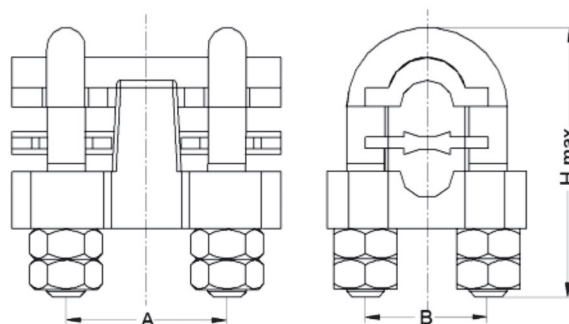
1.1.2 U-BOLT CLAMP USK TYPE



BK 3002 to BK 3004

Material:

*Body – galvanized iron casting
Grooved plates – aluminum casting
U-bolts and nuts – galvanized steel*

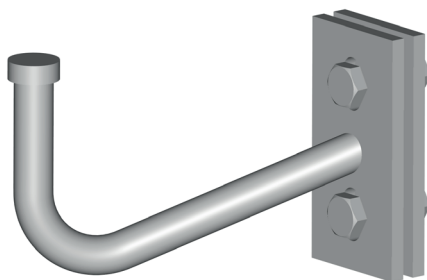


Applications:

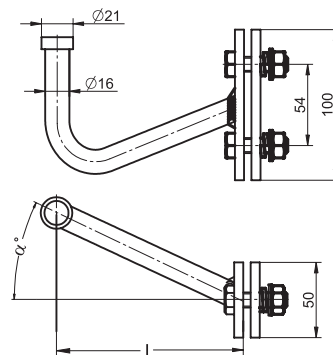
The U-bolt clamp assemblies are designed to connect two aluminum or steel-aluminum conductors or to perform a looped fitting.

Catalog No.	KTM	Type	Conductor diameter range [mm]	Dimensions [mm]			Thread	Min. slipout force for conductor of max. diameter [kN]
				A	B	H		
BK 3002	1131-612-080-810	USK (2411)	8 ÷ 10	34	25	55	M 8	10
BK 3003	1131-612-101-115	USK (2421)	11 ÷ 15	42	32	70	M 10	12
BK 3004	1131-612-121-519	USK (2431)	15 ÷ 19	49	38	95	M 12	14

1.1.3 GROUNDING CLAMP FIXTURE RU

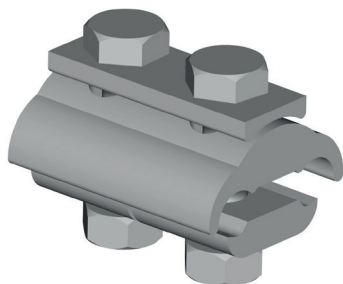


BK 8331 to BK 8333

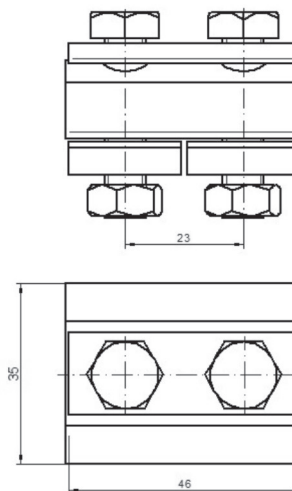
Material:*Hot galvanized steel***Applications:***The connection clamps are designed to connect portable earthing devices.*

Catalog No.	KTM	Type	Dimensions [mm]		Weight [kg]
			L	α	
BK 8331	1119-490-916-010	RU 10	123	22°	0,43
BK 8332	1119-490-916-015	RU 15	124	25°	0,44
BK 8333	1119-490-916-020	RU 20	220	35°	0,62

1.1.4 APG CLAMP



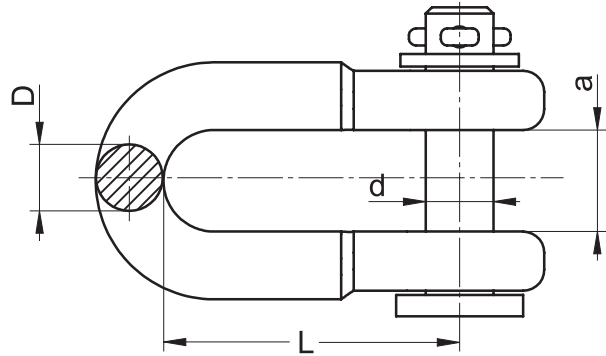
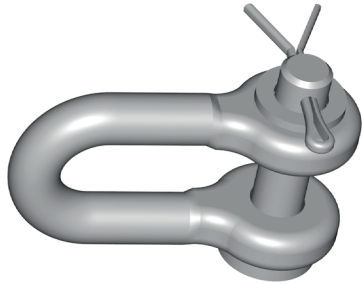
BK 3007

Material:*Aluminium***Applications:***The APG clamp is designed to connect bare aluminum conductors of overhead power lines.*

Catalog No.	KTM	Type	Conductor [mm ²]	Weight [kg]
BK 3007	1131-621-912-105	Parallel groove connector 10-50	10÷50	0,08

1.2 LINKS

1.2.1 SHACKLES WITH PIN



BK 40101 to BK 40104

Material:

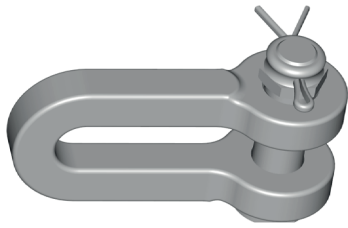
Hot galvanized steel

Applications:

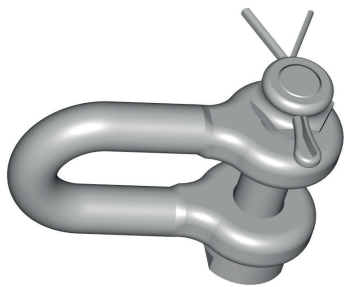
The shackles are designed to connect various fitting components in strings.

Catalog No.	KTM	Type	Dimensions [mm]				Breaking load [kN]	Current-carrying capacity [kA]	Weight [kg]
			L	D	d	a			
BK 40101	1132-600-216-060	ŁKN – 16/60	60	16	16	21	70	12	0,95
BK 40102	1132-600-216-070	ŁKN – 16/70	70	16	16	24	70	12	1,15
BK 40103	1132-600-220-060	ŁKN – 20/60	60	16	20	21	120	25	0,97
BK 40104	1132-600-220-070	ŁKN – 20/70	70	16	20	24	120	25	1,17

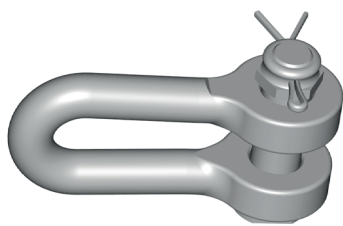
1.2.2 SHACKLES WITH HEX BOLT



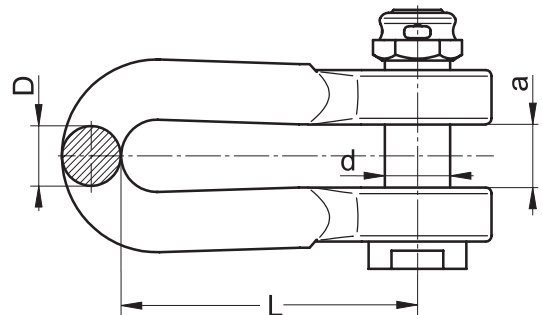
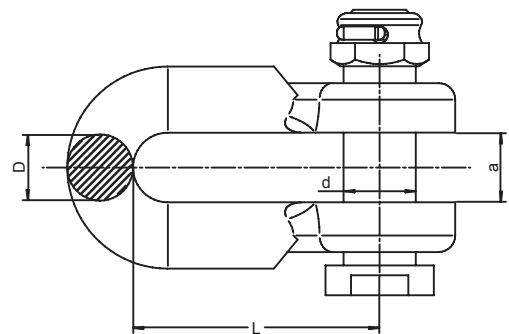
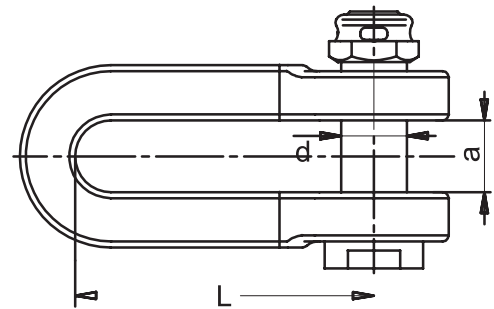
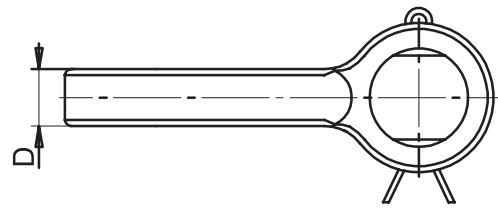
BK 4011



BK 40121 to BK 40124

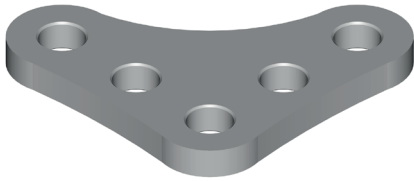


BK 4010 to BK 4012

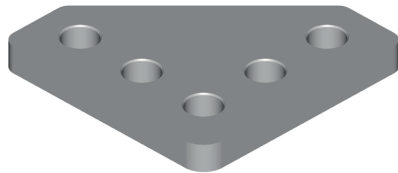
**Material:***Hot galvanized steel***Applications:***The shackles are designed to connect various fitting components in strings.*

Catalog No.	KTM	Type	Dimensions [mm]				Breaking load [kN]	Current-carrying capacity	
			L	D	d	a		[kA]	Weight [kg]
BK 4011	1131-601-122-100	ŁKKS-22/100	100	18	22	21	160	31,5	1,15
BK 40121	1132-600-116-060	ŁKS-16/60	60	16	16	21	120	25	0,66
BK 40122	1132-600-116-070	ŁKS-16/70	70	16	16	24	120	25	0,69
BK 40123	1132-600-119-060	ŁKS-19/60	60	16	19	21	120	25	0,74
BK 40124	1132-600-119-070	ŁKS-19/70	70	16	19	24	120	25	0,77
BK 4010	1131-600-122-075	ŁKS-22/75	75	20	22	21	160	25	0,95
BK 4012	1131-600-122-100	ŁKS-22/100	100	20	22	21	180	25	0,97

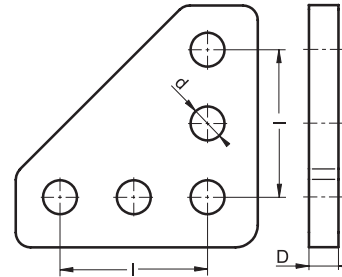
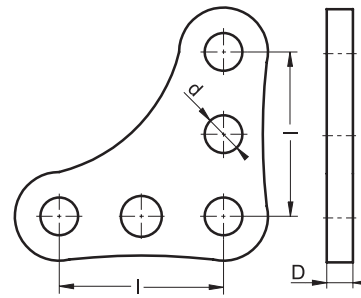
1.2.3 SAG ADJUSTER PLATES



BK 4013

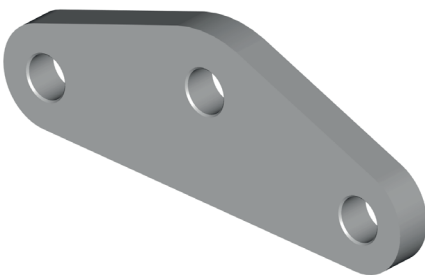


BK 4014

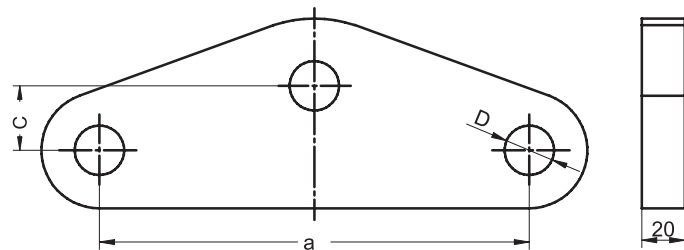
**Material:***Hot galvanized steel***Applications:***The shackles are designed to connect various fitting components in strings.*

Catalog No.	KTM	Dimensions [mm]			Breaking load [kN]	Current-carrying capacity [kA]	Weight [kg]
		I	D	d			
BK 4013	1131-690-154-160	100	16	23	120	40	1,70
BK 4014	1131-690-164-200	100	20	23	250	50	2,65

1.2.4 WHIPPLETREES

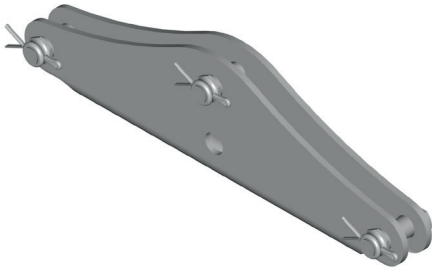


BK 4015

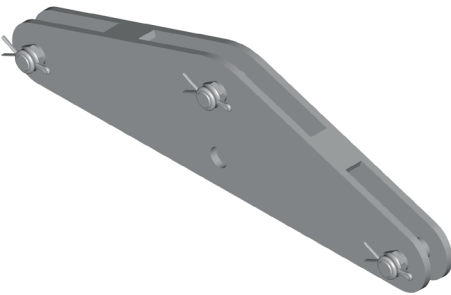
**Material:***Hot galvanized steel***Applications:***The whipletrees is designed to connect various fitting components in strings.*

Catalog No.	KTM	Type	Dimensions [mm]			Breaking load [kN]	Current-carrying capacity [kA]	Weight [kg]
			a	c	D			
BK 4015	1131-690-200-030	ŁO 200/30	200	30	23	180	40	2,47

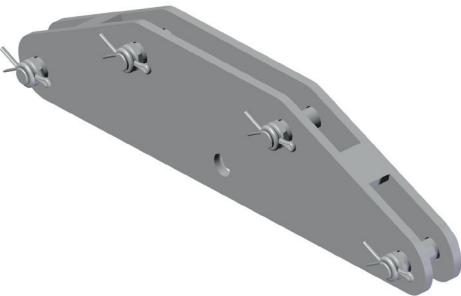
1.2.4 WHIPPLETREES



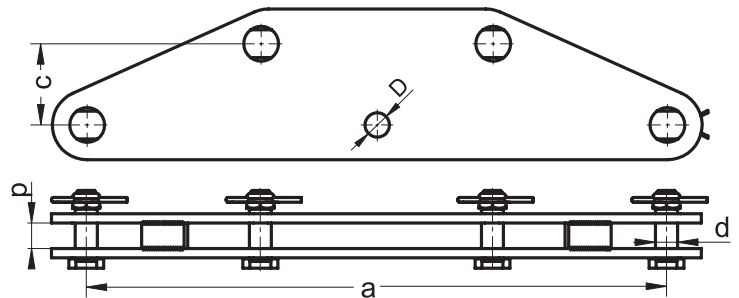
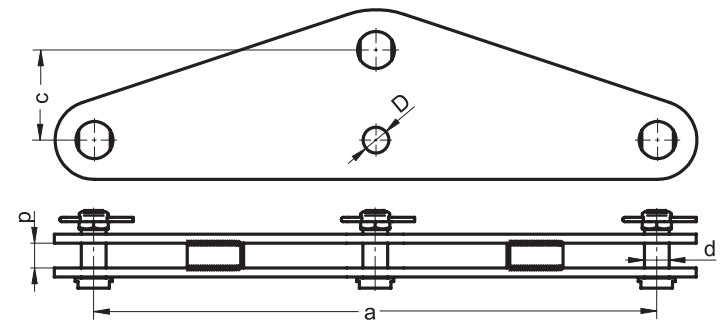
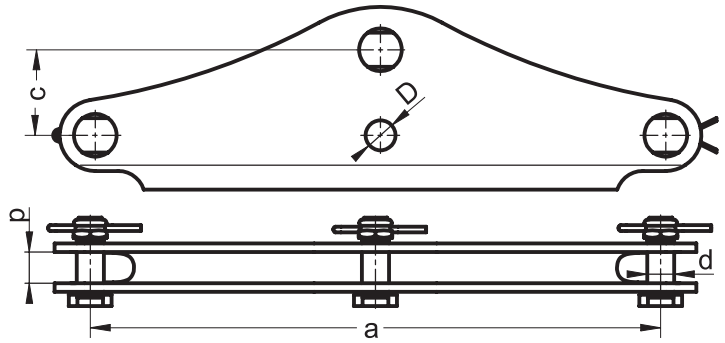
BK 4020



BK 4021

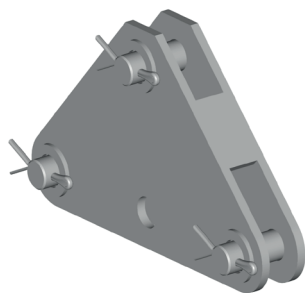


BK 4022

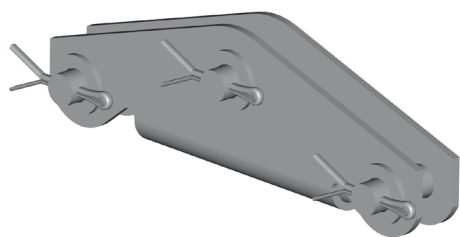
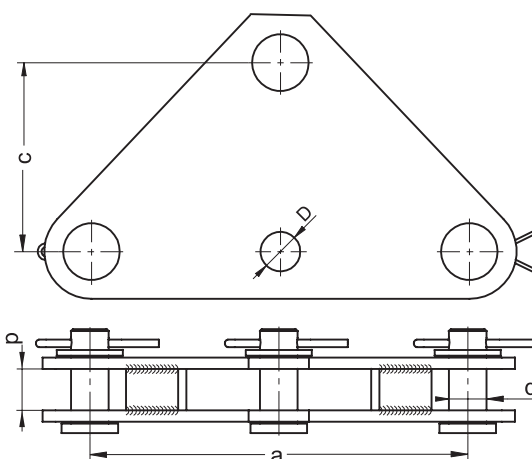
**Material:***Hot galvanized steel***Applications:***The whipletrees are designed to connect various fitting components in strings.*

Catalog No.	KTM	Type	Dimensions [mm]					Breaking load [kN]	Current-carrying capacity [kA]	Weight [kg]
			a	c	d	p	D			
BK 4020	1131-691-906-400	ŁODs 400/19	400	60	19	22	20	120	20	4,35
BK 4021	1131-691-980-500	ŁODs 500/80	500	80	22	22	21	160	40	9,95
BK 4022	1131-691-970-500	ŁODs 500/70	500	70	22	22	21	160	40	7,48

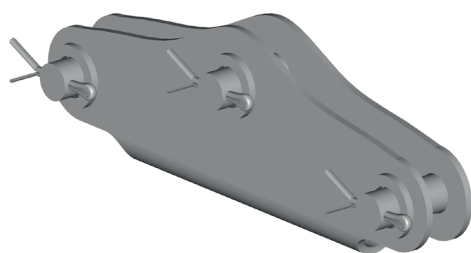
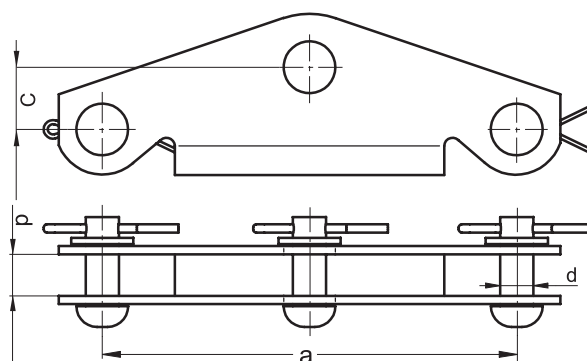
1.2.4 WHIPPLETREES



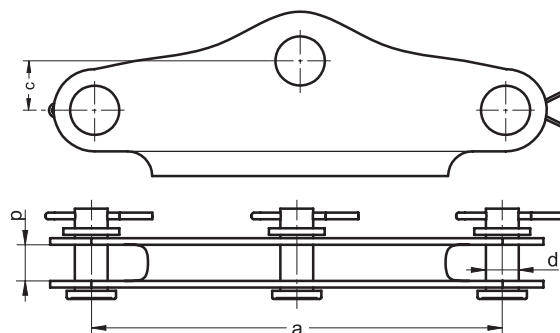
BK 4023



BK 4019



BK 4025

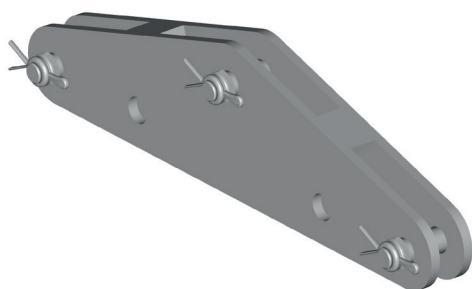


Material:
Hot galvanized steel

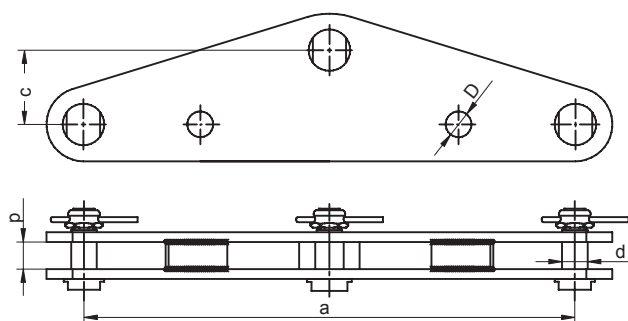
Applications:
The whipletrees are designed to connect various fitting components in strings.

Catalog No.	KTM	Type	Dimensions [mm]					Breaking load [kN]	Current-carrying capacity [kA]	Weight [kg]
			a	c	d	p	D			
BK 4023	1131-692-006-200	ŁODn 200/20	200	100	20	22	21	120	20	2,95
BK 4019	1131-690-911-200	ŁOD II	200	30	16	22	-	40	16	1,57
BK 4025	1131-692-004-250	ŁODn 250/20	250	30	20	22	-	40	16	1,57

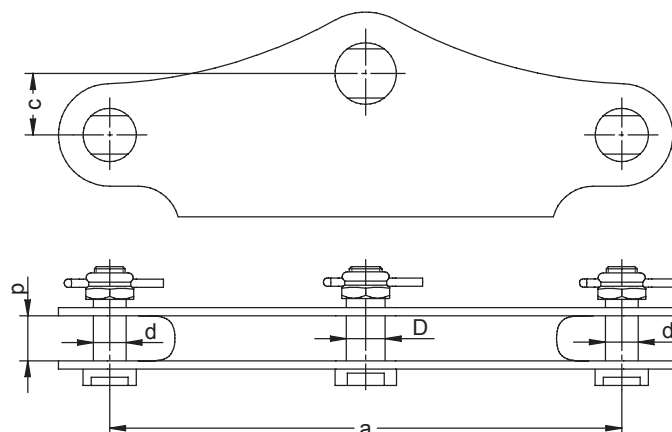
1.2.4 WHIPPLETREES



BK 4024

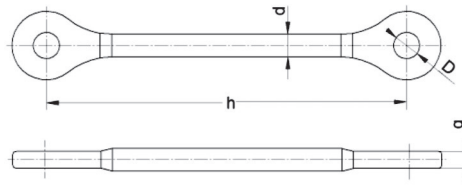
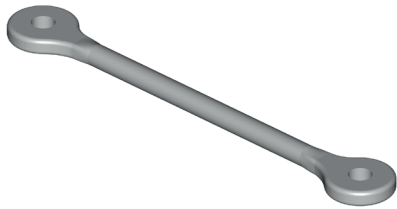


BK 4026

**Material:***Hot galvanized steel***Applications:***The whipletrees are designed to connect various fitting components in strings.*

Catalog No.	KTM	Type	Dimensions [mm]					Breaking load [kN]	Current-carrying capacity [kA]	Weight [kg]
			a	c	d	p	D			
BK 4024	1131-692-260-400	ŁODs 400/22/60	400	60	22	22	21	160	40	7,41
BK 4026	1131-692-430-250	ŁODs 250/16/19	250	30	16	22	19	40	16	1,98

1.2.5 EXTENSION ROD LINKS

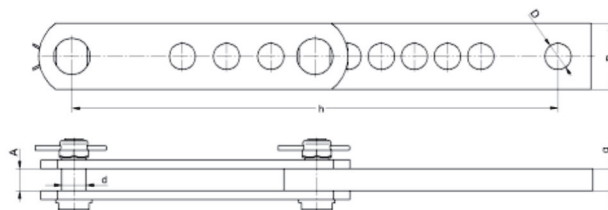
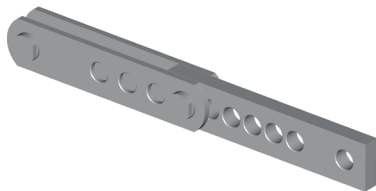


BK 4140 to BK 4151

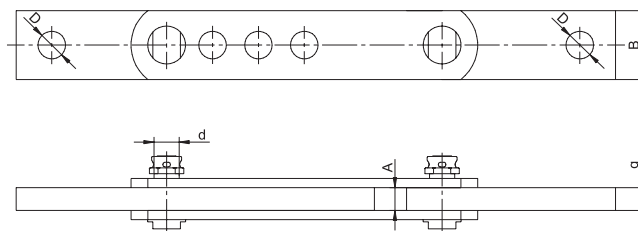
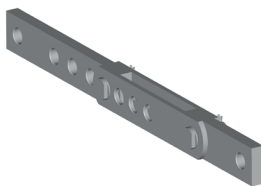
Material:*Hot galvanized steel***Applications:***The extension links are designed to adjust length of suspended conductors on strings.*

Catalog No.	Type	Dimensions [mm]				Breaking load [kN]	Current-carrying capacity [kA]	Weight [kg]
		h	d	D	g			
BK 4140	ŁPC-120/17/150	150	16	17	12	120	25	0,4
BK 4141	ŁPC -120/17/200	200	16	17	12	120	25	0,46
BK 4142	ŁPC-120/17/300	300	16	17	12	120	25	0,62
BK 4143	ŁPC-180/23/450	450	20	23	16	180	25	1,36
BK 4144	ŁPC-180/23/500	500	20	23	16	180	25	1,5
BK 4145	ŁPC-180/23/700	700	20	23	16	180	25	1,98
BK 4146	ŁPC-300/28/170	170	24	28	20	300	25	1,04
BK 4147	ŁPC-300/28/230	230	24	28	20	300	25	1,01
BK 4148	ŁPC-180/23/400	400	24	23	20	180	25	1,37
BK 4149	ŁPC-300/28/400	400	24	28	20	300	25	1,36
BK 4150	ŁPC-300/28/600	600	24	28	20	300	25	1,99
BK 4151	ŁPC-180/23/680	680	24	23	20	180	25	1,98

1.2.6 ADJUSTABLE EXTENSION LINKS



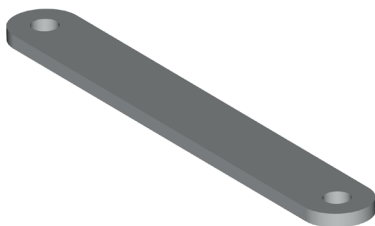
BK 4103 to BK 4103/3



BK 4103/7

Catalog No.	Type	Dimensions [mm]						Breaking load [kN]	Current-carrying capacity [kA]	Weight [kg]
		h	d	D	g	A	B			
BK 4103	ŁPR 290/440	290/440	22	24	20	22	50	160	31,5	4,76
BK 4103/1	ŁPR 208/304	208/304	19	23	20	21	50	120	31,5	3,62
BK 4103/2	ŁPR 470/790	470/790	22	23	20	21	60	160	31,5	7,54
BK 4103/3	ŁPR 460/780	460/780	19	25	18	21	50	160	31,5	7,21
BK 4103/7	ŁPRD 460/610	460/610	22	23	20	21	60	160	31,5	6,16

1.2.7 EXTENSION FLAT BAR LINKS

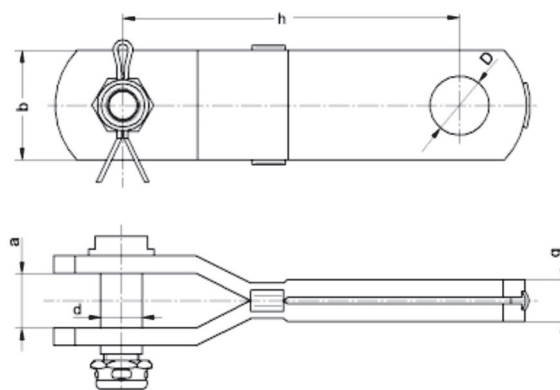
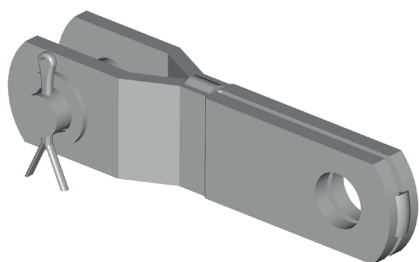


BK 4101 to BK 4102/5

Material:*Hot galvanized steel***Applications:***The extension links are designed to adjust length of suspended conductors on strings.*

Catalog No.	KTM	Type	Dimensions [mm]				Current-carrying capacity		
			h	D	g	B	Breaking load [kN]	[kA]	Weight [kg]
BK 4101	1131-691-402-360	ŁPP-1	400	23	20	60	180	40	5,02
BK 4102	1131-691-502-360	ŁPP-2	500	23	12	60	120	40	2,80
BK 4102/1	1131-691-172-860	ŁPP 170/28	170	28	20	60	300	40	2,50
BK 4102/2	1131-691-232-860	ŁPP 230/28	230	28	20	60	300	40	2,85
BK 4102/3	1131-691-402-860	ŁPP 400/28	400	28	20	60	300	40	4,40
BK 4102/4	1131-691-602-860	ŁPP 600/28	600	28	20	60	300	40	6,25
BK 4102/5	1131-691-682-360	ŁPP 680/23	680	23	20	60	300	40	7,00

1.2.8 CLEVIS-YOKE LINKS WITH PIN

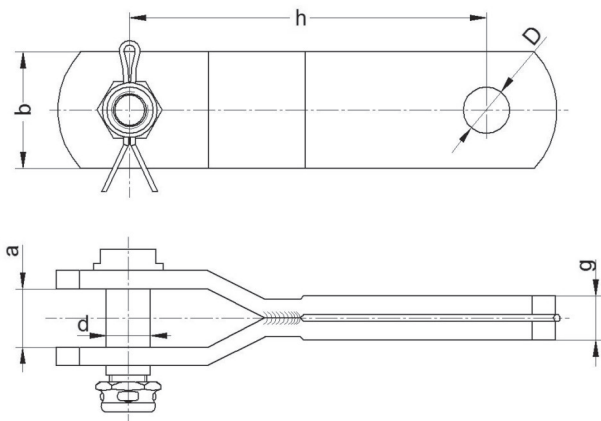
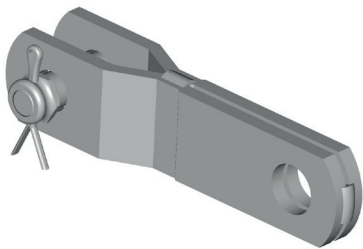


BK 4104 to BK 4113

Material:*Hot galvanized steel***Applications:***The extension links are designed to adjust length of suspended conductors on strings.*

Catalog No.	KTM	Type	Dimensions [mm]						Current-carrying capacity		
			h	d	D	g	a	b	Breaking load [kN]	[kA]	Weight [kg]
BK 4104	1131-690-516-150	ŁPJn 16/150	150	16	22	13	22	40	40	12	1,35
BK 4104/A	1131-690-516-200	ŁPJn 16/200	200	16	22	13	22	40	40	12	1,37
BK 4100	1131-690-820-150	ŁPJn 20/150	150	20	27	19	22	50	120	25	1,7
BK 4105	1131-690-820-300	ŁPJn 20/300	300	20	27	19	22	50	120	25	1,6
BK 4106	1131-690-820-320	ŁPJn 20/320	320	20	27	19	22	50	120	25	2,8
BK 4107	1131-690-820-400	ŁPJn 20/400	400	20	27	19	22	50	120	25	2,75
BK 4108	1131-690-820-450	ŁPJn 20/450	450	20	27	19	22	50	120	25	3,35
BK 4109	1131-690-820-600	ŁPJn 20/600	600	20	27	19	22	50	120	25	4,3
BK 4110	1131-690-820-700	ŁPJn 20/700	700	20	27	19	22	50	120	25	4,9
BK 4111	1131-690-820-850	ŁPJn 20/850	850	20	27	19	22	50	120	25	6
BK 4112/A	1131-690-820-900	ŁPJn 20/900	900	20	27	19	22	50	120	25	7,5
BK 4112	1131-690-820-100	ŁPJn 20/1000	1000	20	27	19	22	50	120	25	8
BK 4113	1131-690-820-110	ŁPJn 20/1100	1100	20	27	19	22	50	120	25	9

1.2.9. CLEVIS-YOKE LINKS WITH HEX BOLT

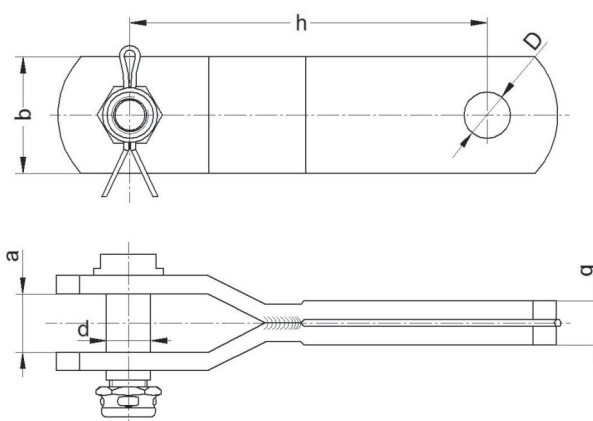
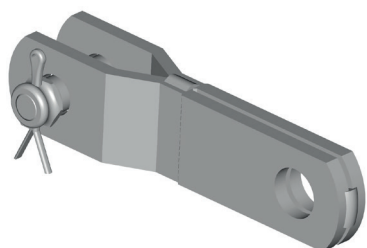


BK 4114 to BK 4126

Material:*Hot galvanized steel***Applications:***The extension links are designed to adjust length of suspended conductors on strings.*

Catalog No.	KTM	Type	Dimensions [mm]						Current-carrying capacity		
			h	d	D	g	a	b	Breaking load [kN]	[kA]	Weight [kg]
BK 4114	1131-691-819-150	ŁPJs 19/150	150	19	27	19	22	50	120	25	1,35
BK 4117	1131-691-819-300	ŁPJs 19/300	300	19	27	19	22	50	120	25	1,6
BK 4118	1131-691-819-320	ŁPJs 19/320	320	19	27	19	22	50	120	25	2,8
BK 4119	1131-691-819-400	ŁPJs 19/400	400	19	27	19	22	50	120	25	2,75
BK 4120	1131-691-819-450	ŁPJs 19/450	450	19	27	19	22	50	120	25	3,35
BK 4121	1131-691-819-600	ŁPJs 19/600	600	19	27	19	22	50	120	25	4,3
BK 4122	1131-691-819-700	ŁPJs 19/700	700	19	27	19	22	50	120	25	4,9
BK 4123	1131-691-819-850	ŁPJs 19/850	850	19	27	19	22	50	120	25	6
BK 4124	1131-691-819-900	ŁPJs 19/900	900	19	27	19	22	50	120	25	7,5
BK 4125	1131-691-819-1000	ŁPJs 19/1000	1000	19	27	19	22	50	120	25	8
BK 4126	1131-691-819-011	ŁPJs 19/1100	1100	19	27	19	22	50	120	25	9

1.2.9 CLEVIS-YOKE LINKS WITH HEX BOLT

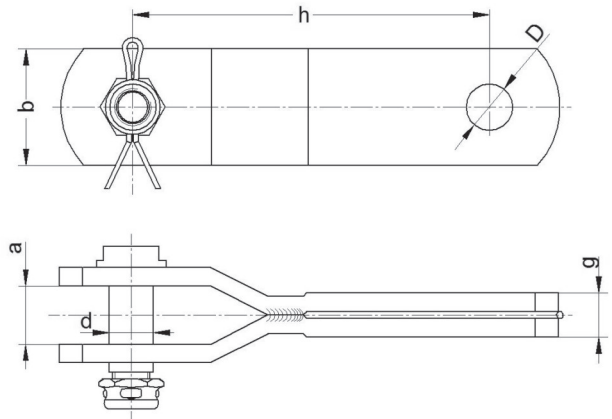
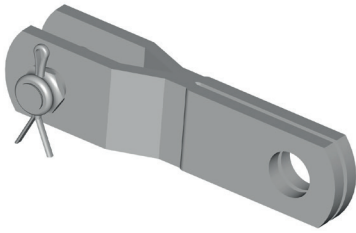


BK 4171/100 to BK 4171/250

Material:*Hot galvanized steel***Applications:***The extension links are designed to adjust length of suspended conductors on strings.*

Catalog No.	KTM	Type	Dimensions [mm]						Current-carrying capacity		
			h	d	D	g	a	b	Breaking load [kN]	[kA]	Weight [kg]
BK 4171/100	1131-681-100-819	ŁPJs(g) 19/100/20	100	19	20	19	22	50	240	25	1,10
BK 4171/125	1131-681-125-819	ŁPJs(g) 19/125/20	125	19	20	19	22	50	240	25	1,25
BK 4171/150	1131-681-150-819	ŁPJs(g) 19/150/20	150	19	20	19	22	50	240	25	1,40
BK 4171/200	1131-681-200-819	ŁPJs(g) 19/200/20	200	19	20	19	22	50	240	25	1,69
BK 4171/250	1131-681-250-819	ŁPJs(g) 19/250/20	250	19	20	19	22	50	240	25	1,99

1.2.9 CLEVIS-YOKE LINKS WITH HEX BOLT

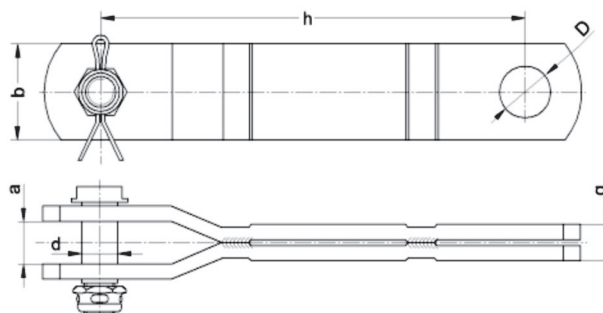
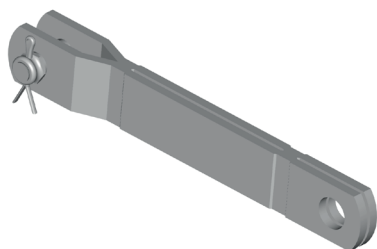


BK 4172/100 to BK 4172/400

Material:*Hot galvanized steel***Applications:***The extension links are designed to adjust length of suspended conductors on strings.*

Catalog No.	KTM	Type	h	Dimensions [mm]					Current-carrying capacity		Weight [kg]
				d	D	g	a	b	Breaking load [kN]	[kA]	
BK 4172/100	1131-691-100-819	ŁPJs 19/100/215	100	19	21,5	19	22	50	120	25	1,12
BK 4172/110	1131-691-110-819	ŁPJs 19/110/215	110	19	21,5	19	22	50	120	25	1,20
BK 4172/120	1131-691-120-819	ŁPJs 19/120/215	120	19	21,5	19	22	50	120	25	1,25
BK 4172/150	1131-691-150-819	ŁPJs 19/150/215	150	19	21,5	19	22	50	120	25	1,42
BK 4172/200	1131-691-200-819	ŁPJs 19/200/215	200	19	21,5	19	22	50	120	25	1,74
BK 4172/235	1131-691-235-819	ŁPJs 19/235/215	235	19	21,5	19	22	50	120	25	1,94
BK 4172/300	1131-691-300-819	ŁPJs 19/300/215	300	19	21,5	19	22	50	120	25	2,36
BK 4172/400	1131-691-400-819	ŁPJs 19/400/215	400	19	21,5	19	22	50	120	25	2,98

1.2.9 CLEVIS-YOKE LINKS WITH HEX BOLT

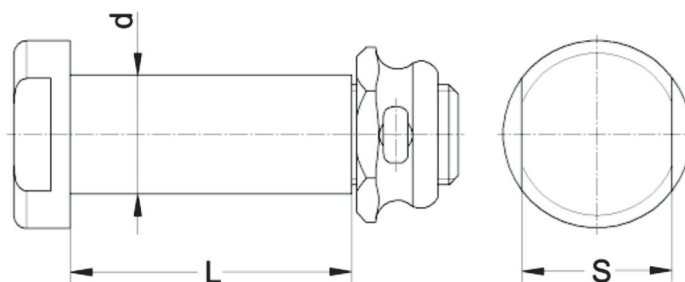
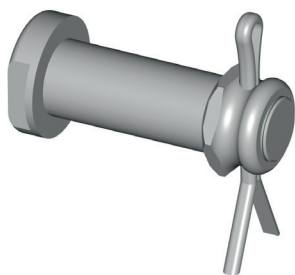


BK 4130/100 to BK 4130/1120

Material:*Hot galvanized steel***Applications:***The extension links are designed to adjust length of suspended conductors on strings.*

Catalog No.	KTM	Type	h	Dimensions [mm]						Current-carrying capacity		Weight [kg]
				d	D	g	a	b	Breaking load [kN]	[kA]		
BK 4130/100	1131-681-822-100	ŁPJs(g) 22/100	100	22	23	19	22	50	180	40	1,25	
BK 4130/150	1131-681-822-150	ŁPJs(g) 22/150	150	22	23	19	22	50	180	40	1,45	
BK 4130/200	1131-681-822-200	ŁPJs(g) 22/200	200	22	23	19	22	50	180	40	1,76	
BK 4130/250	1131-681-822-250	ŁPJs(g) 22/250	250	22	23	19	22	50	180	40	2,07	
BK 4130/300	1131-681-822-300	ŁPJs(g) 22/300	300	22	23	19	22	50	180	40	2,37	
BK 4130/350	1131-681-822-350	ŁPJs(g) 22/350	350	22	23	19	22	50	180	40	2,68	
BK 4130/400	1131-681-822-400	ŁPJs(g) 22/400	400	22	23	19	22	50	180	40	2,99	
BK 4130/450	1131-681-822-450	ŁPJs(g) 22/450	450	22	23	19	22	50	180	40	3,31	
BK 4130/500	1131-681-822-500	ŁPJs(g) 22/500	500	22	23	19	22	50	180	40	3,62	
BK 4130/550	1131-681-822-550	ŁPJs(g) 22/550	550	22	23	19	22	50	180	40	3,93	
BK 4130/600	1131-681-822-600	ŁPJs(g) 22/600	600	22	23	19	22	50	180	40	4,18	
BK 4130/650	1131-681-822-650	ŁPJs(g) 22/650	650	22	23	19	22	50	180	40	4,54	
BK 4130/700	1131-681-822-700	ŁPJs(g) 22/700	700	22	23	19	22	50	180	40	4,86	
BK 4130/750	1131-681-822-750	ŁPJs(g) 22/750	750	22	23	19	22	50	180	40	5,17	
BK 4130/800	1131-681-822-800	ŁPJs(g) 22/800	800	22	23	19	22	50	180	40	5,48	
BK 4130/850	1131-681-822-850	ŁPJs(g) 22/850	850	22	23	19	22	50	180	40	5,78	
BK 4130/900	1131-681-822-900	ŁPJs(g) 22/900	900	22	23	19	22	50	180	40	6,09	
BK 4130/950	1131-681-822-950	ŁPJs(g) 22/950	950	22	23	19	22	50	180	40	6,41	
BK 4130/1000	1131-681-822-010	ŁPJs(g) 22/1000	1000	22	23	19	22	50	180	40	6,72	
BK 4130/1050	1131-681-822-105	ŁPJs(g) 22/1050	1050	22	23	19	22	50	180	40	7,03	
BK 4130/1100	1131-681-822-110	ŁPJs(g) 22/1100	1100	22	23	19	22	50	180	40	7,34	
BK 4130/1120	1131-681-822-112	ŁPJs(g) 22/1120	1120	22	23	19	22	50	180	40	7,45	

1.2.10 COMPLETE SCREW BOLT WITH SPLIT PIN

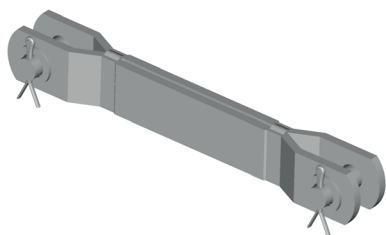


BK 4150/34 to BK 4160/83

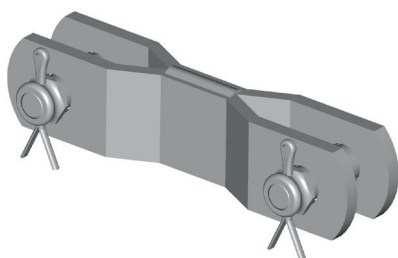
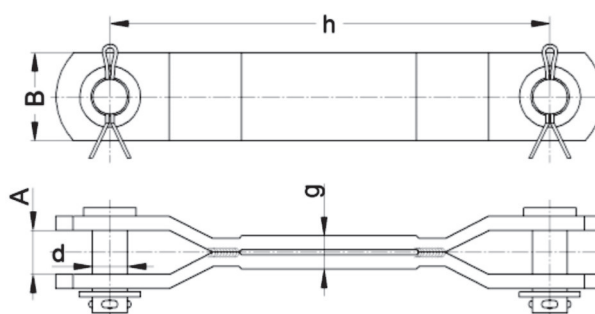
Material:*Hot galvanized steel***Applications:***The complete screw bolt is a connecting member designed to connect electrical power equipment.*

Catalog No.	KTM	Type	Dimensions [mm]			Current-carrying capacity [kA]	Weight [kg]
			L	d	s		
BK 4150/34	1131-691-019-034	S19 x 34-8.8	34	19	24	40	0,17
BK 4150/38	1131-691-019-038	S19 x 38-8.8	38	19	24	40	0,18
BK 4150/43	1131-691-019-043	S19 x 43-8.8	43	19	24	40	0,19
BK 4150/48	1131-691-019-048	S19 x 48-8.8	48	19	24	40	0,20
BK 4150/52	1131-691-019-052	S19 x 52-8.8	52	19	24	40	0,21
BK 4150/56	1131-691-019-056	S19 x 56-8.8	56	19	24	40	0,22
BK 4150/60	1131-691-019-060	S19 x 60-8.8	60	19	24	40	0,23
BK 4150/105	1131-691-019-105	S19 x 105-8.8	105	19	24	40	0,33
BK 4150/125	1131-691-019-125	S19 x 125-8.8	125	19	24	40	0,39
BK 4150/130	1131-691-019-130	S19 x 130-8.8	130	19	24	40	0,42
BK 4150/145	1131-691-019-145	S19 x 145-8.8	145	19	24	40	0,47
BK 4150/185	1131-691-019-185	S19 x 185-8.8	185	19	24	40	0,51
BK 4150/205	1131-691-019-205	S19 x 205-8.8	205	19	24	40	0,56
BK 4150/225	1131-691-019-225	S19 x 225-8.8	225	19	24	40	0,60
BK 4160/34	1131-691-022-034	S 22 x 34-8.8	34	22	27	50	0,21
BK 4160/38	1131-691-022-038	S 22 x 38-8.8	38	22	27	50	0,22
BK 4160/43	1131-691-022-043	S 22 x 43-8.8	43	22	27	50	0,24
BK 4160/48	1131-691-022-048	S 22 x 48-8.8	48	22	27	50	0,25
BK 4160/52	1131-691-022-052	S 22 x 52-8.8	52	22	27	50	0,26
BK 4160/56	1131-691-022-056	S 22 x 56-8.8	56	22	27	50	0,28
BK 4160/60	1131-691-022-060	S 22 x 60-8.8	60	22	27	50	0,29
BK 4160/72	1131-691-022-072	S 22 x 72-8.8	72	22	27	50	0,30
BK 4160/83	1131-691-022-083	S 22 x 83-8.8	83	22	27	50	0,35

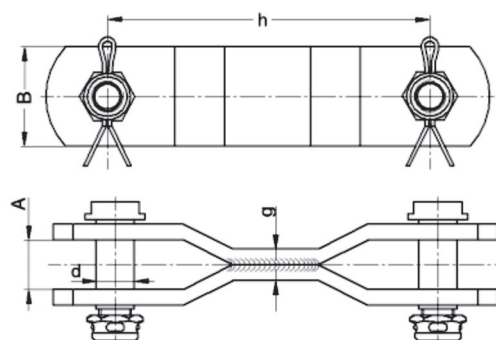
1.2.11 EXTENSION CLEVIS-CLEVIS LINKS



BK 4200 to BK 4204

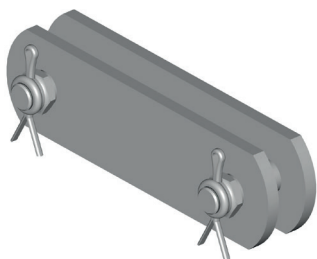


BK 4300

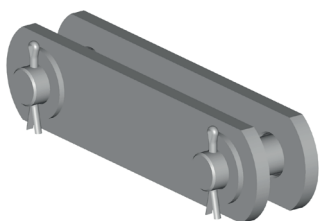
**Material:***Hot galvanized steel***Applications:***The extension clevis-clevis links are designed to connect various fitting components in strings.*

Catalog No.	KTM	Type	Dimensions [mm]					Current-carrying capacity		
			h	d	g	A	B	Breaking load [kN]	[kA]	Weight [kg]
BK 4200	1131-693-820-150	ŁPDn 20/150	150	20	19	22	50	120	25	1,54
BK 4201	1131-693-820-300	ŁPDn 20/300	300	20	19	22	50	120	25	2,25
BK 4202	1131-693-820-600	ŁPDn 20/600	600	20	19	22	50	120	25	4,5
BK 4203	1131-693-820-850	ŁPDn 20/850	850	20	19	22	50	120	25	6,65
BK 4204	1131-693-820-1200	ŁPDn 20/1200	1200	20	19	22	50	120	25	9,14
BK 4300	1131-694-819-150	ŁPDs 19/150	150	19	19	22	50	120	25	1,7

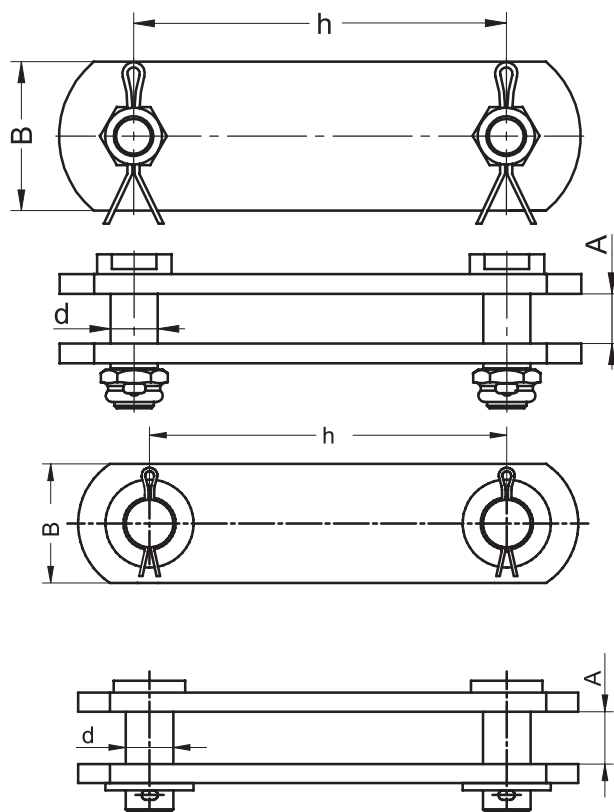
1.2.12 DOUBLE FLAT BAR LINKS



BK 4400

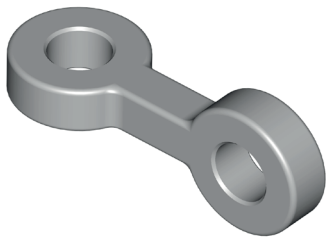


BK 4403

**Material:***Hot galvanized steel***Applications:***The double flat bar links are designed to connect various fitting components in strings.*

Catalog No.	KTM	Type	Dimensions [mm]				Current-carrying capacity		
			h	d	A	B	Breaking load [kN]	[kA]	Weight [kg]
BK 4400	1131-685-822-150	ŁPDPs(g) 22/150	150	22	22	60	180	40	1,95
BK 4403	1131-686-820-150	ŁPDPn 20/150	150	20	22	50	120	25	1,42

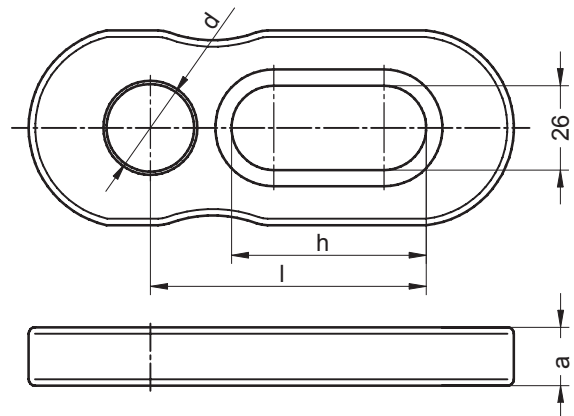
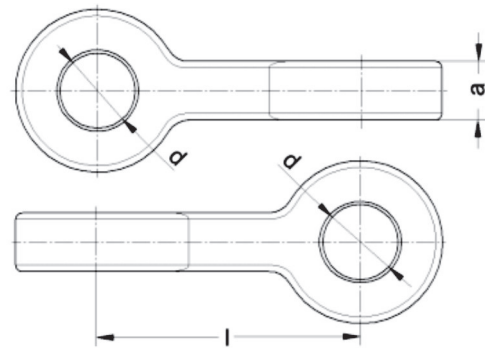
1.2.13 DOUBLE EYE LINKS



BK 4001

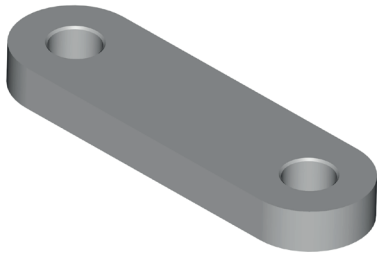


BK 4002

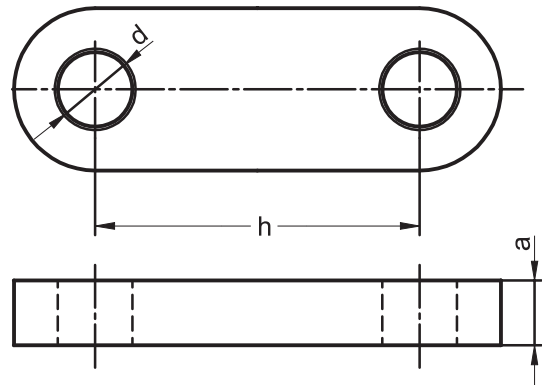
**Material:***Hot galvanized steel***Applications:***The double flat bar links are designed to connect various fitting components in strings.*

Catalog No.	KTM	Type	Dimensions [mm]				Breaking load [kN]	Current-carrying capacity [kA]	Weight [kg]
			l	d	a	h			
BK 4001	1131-690-070-023	ŁDS 70	70	23	18	-	160	20	0,55
BK 4002	1131-690-085-027	ŁDO 85	85	27	18	60	300	31,5	0,78

1.2.13 DOUBLE EYE LINKS

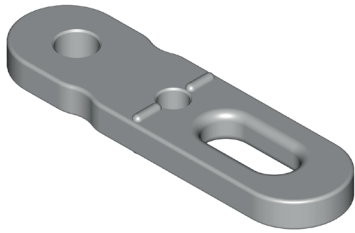


BK 4003 to BK 4004/7

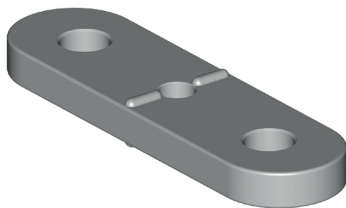
Material:*Hot galvanized steel***Applications:***The double eye links are designed to connect various fitting components in strings.*

Catalog No.	KTM	Type	Dimensions [mm]			Current-carrying capacity		Weight [kg]
			d	a	h	Breaking load [kN]	[kA]	
BK 4003	1131-690-136-230	ŁD 136/23	23	20	136	210	40	1,51
BK 4004	1131-690-080-230	ŁD 80/27	27	20	80	300	40	1,12
BK 4004/1	1131-690-100-230	ŁD 100/23	23	20	100	300	40	1,36
BK 4004/2	1131-690-136-270	ŁD 136/27	27	20	136	300	40	1,70
BK 4004/3	1131-690-070-230	ŁD 70/23	23	20	70	210	40	1,01
BK 4004/4	1131-690-210-230	ŁD 210/23	23	20	210	210	40	2,10
BK 4004/5	1131-690-410-230	ŁD 410/23	23	20	410	210	40	3,75
BK 4004/6	1131-690-350-230	ŁD 350/23	23	20	350	300	40	3,62
BK 4004/7	1131-690-070-200	ŁD 70/20	20	20	70	210	40	0,72

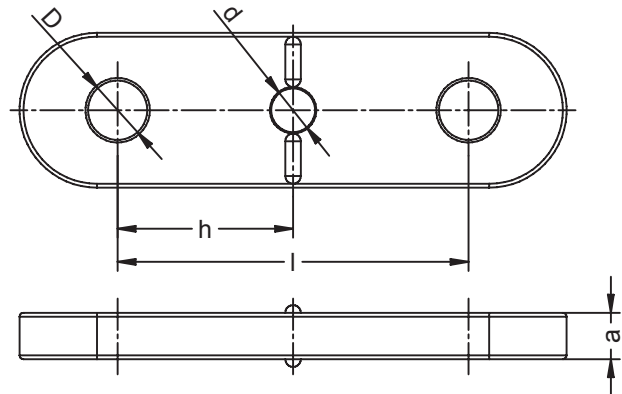
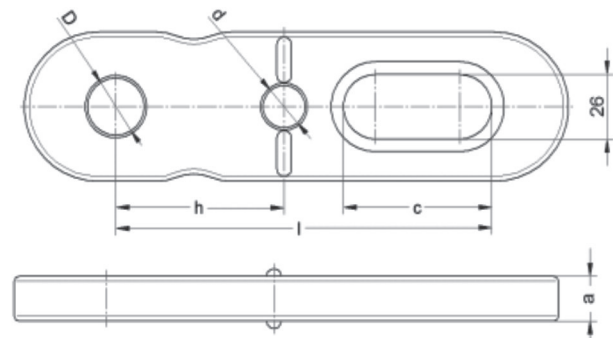
1.2.14 LINKS FOR INSULATOR FITTINGS: DOUBLE EYE AND SINGLE EYE-BALL ENDED LINKS



BK 4030

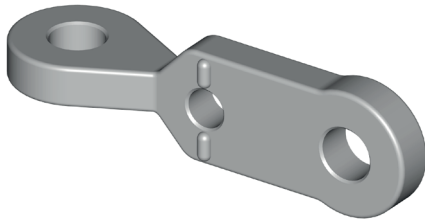


BK 4030/1 BK 4030/1A

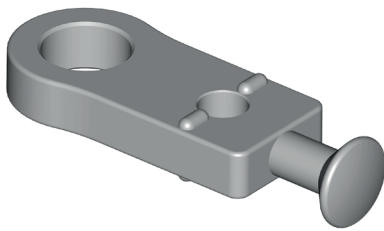
**Material:***Hot galvanized steel***Applications:***The links are designed to connect insulators with protection fittings or with other equipment components.*

Catalog No.	KTM	Type	Dimensions [mm]						Current-carrying capacity		Weight [kg]
			I	D	d	h	c	a	Breaking load [kN]	[kA]	
BK 4030	1131-690-152-180	ŁDR 152	152	23	17	60	60	18	210	31,5	1,46
BK 4030/1	1131-690-136-212	ŁDR 136/23	136	23	17	68	-	18	300	40	1,48
BK 4030/1A	1131-690-136-312	ŁDR 136/27	136	27	17	68	-	18	300	40	1,48

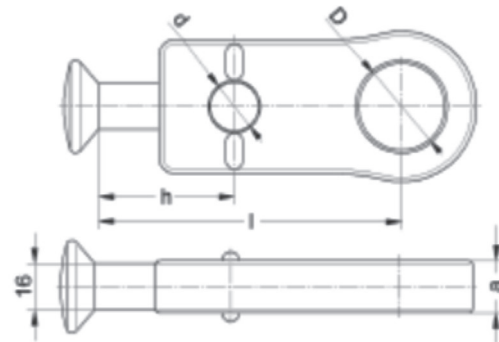
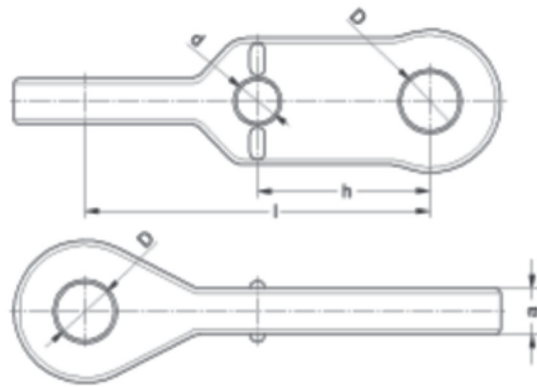
1.2.14 LINKS FOR INSULATOR FITTINGS: DOUBLE EYE AND SINGLE EYE-BALL ENDED LINKS



BK 4031

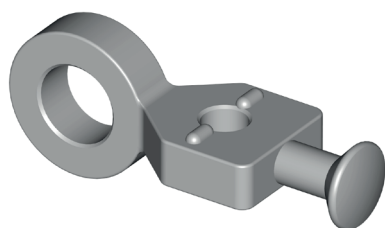


BK 4032

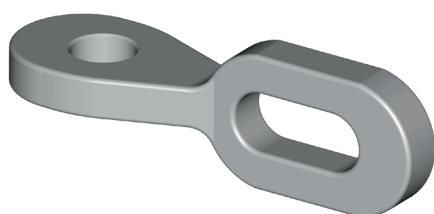
**Material:***Hot galvanized steel***Applications:***The links are designed to connect insulators with protection fittings or with other equipment components.*

Catalog No.	KTM	Type	Dimensions [mm]					Breaking load [kN]	Current-carrying capacity [kA]	Weight [kg]
			I	D	d	h	a			
BK 4031	1131-690-136-023	ŁDS 136	136	23	17	68	18	210	31,5	1,19
BK 4032	1131-690-103-180	ŁGUP 103	103	30	17	47	18	120	16	0,73

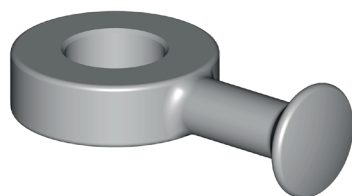
1.2.14 LINKS FOR INSULATOR FITTINGS: DOUBLE EYE AND SINGLE EYE-BALL ENDED LINKS



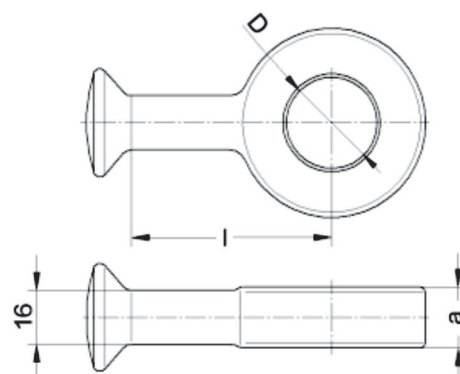
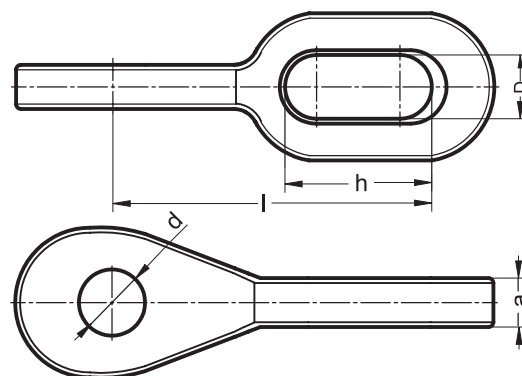
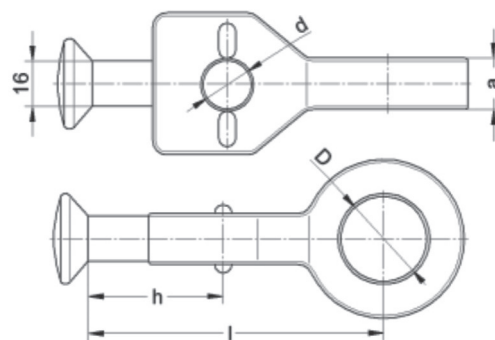
BK 4033



BK 4038

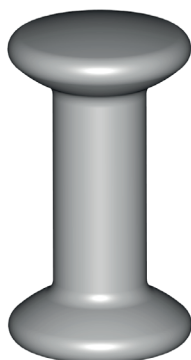


BK 4039

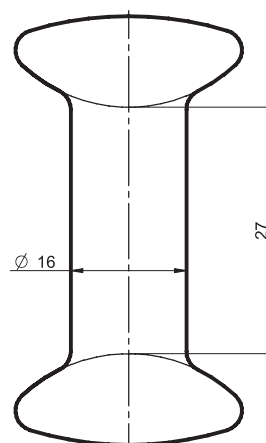
**Material:***Hot galvanized steel***Applications:***The links are designed to connect insulators with protection fittings or with other equipment components.*

Catalog No.	KTM	Type	Dimensions [mm]					Breaking load [kN]	Current-carrying capacity [kA]	Weight [kg]
			l	D	d	h	a			
BK 4033	1131-690-103-330	ŁGUS 103	103	30	17	47	18	120	16	0,73
BK 4038	1131-690-130-380	ŁDS 130	130	26	27	60	18	300	31,5	1,59
BK 4039	1131-690-061-390	ŁGU 27/61	61	27	-	-	18	120	16	0,35

1.2.15 TWO-SIDED BALL ENDED LINKS £D 16/27

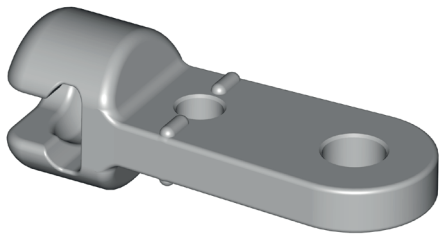


BK 4008

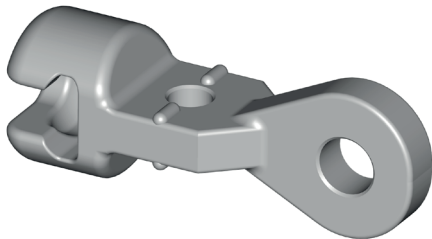
**Material:***Hot galvanized steel***Applications:***The links are designed to connect long-rod insulators with socket links.*

Catalog No.	KTM	Type	Breaking load [kN]	Current-carrying capacity [kA]	Weight [kg]
BK 4008	1131-811-400-203	£D 16/27	120	16	0,16

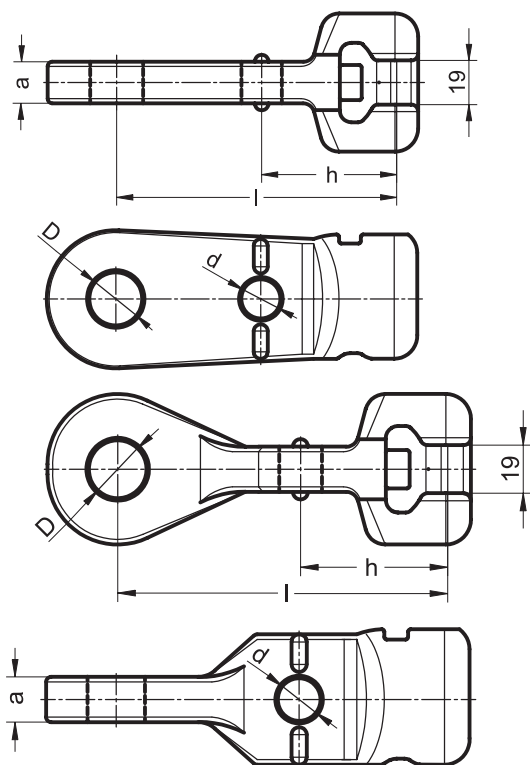
1.2.16 SOCKET-EYE LINKS



BK 4036

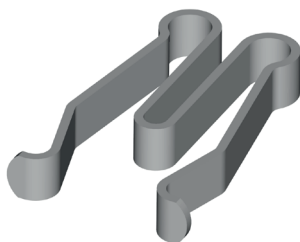


BK 4040

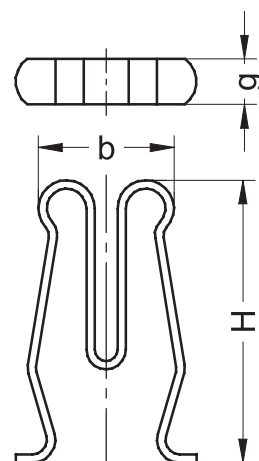
Material:*Hot galvanized cast iron***Applications:***The links are designed to connect insulators with protection fittings or with other equipment components.*

Catalog No.	KTM	Type	Dimensions [mm]					Current-carrying capacity		
			l	D	d	h	a	Breaking load [kN]	[kA]	Weight [kg]
BK 4036	1131-690-120-036	ŁGU 120	120	23	17	57	18	120	20	1,40
BK 4040	1131-690-130-040	ŁSGU 130	130	23	17	57	18	120	20	1,37

1.2.17 SPRING COTTER FOR SOCKET LINKS



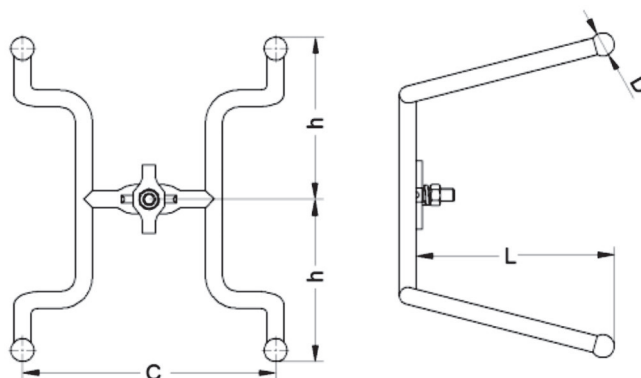
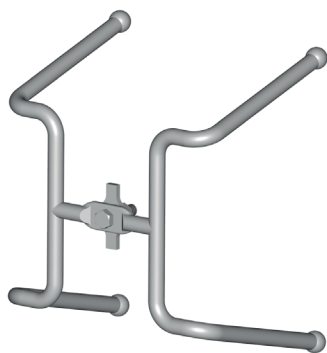
BK 4006

Material:*A2 steel***Zastosowanie:***The spring cotter is designed to lock the socket coupling.*

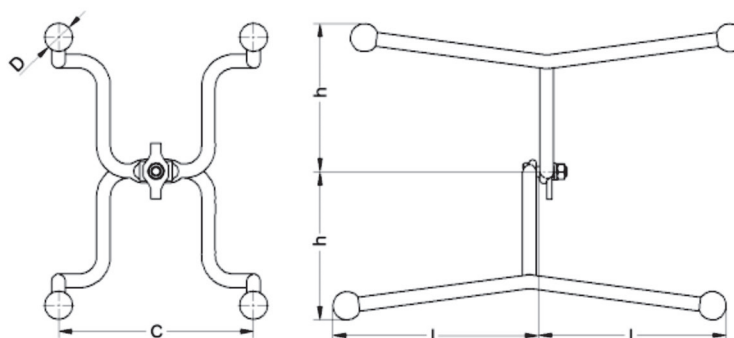
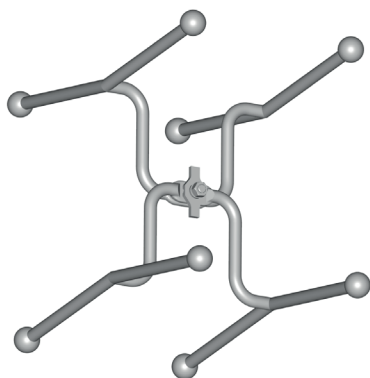
Catalog No.	KTM	Type	Dimensions [mm]			Weight [kg]
			H	b	g	
BK 4006	1131-690-050-008	W16/B	50	24	8	0,017

1.3 INSULATOR FITTINGS

1.3.1 MIDDLE ARCING HORNS



BK 5020 to BK 5021



BK 5120

Material:

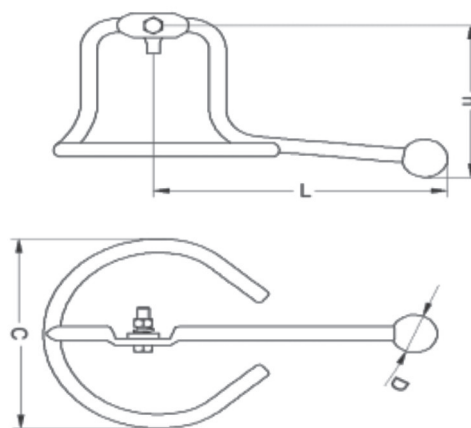
Hot galvanized steel

Applications:

The middle arcing horns are components of insulator fittings for insulator strings.

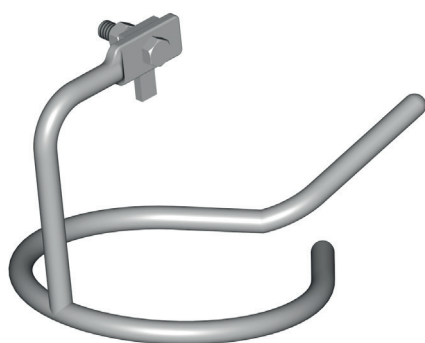
Catalog No.	KTM	Type	Dimensions [mm]				Current-carrying capacity [kA]	Weight [kg]
			h	L	c	D		
BK 5020	1131-690-210-255	RŚ 210	210	255	325	30	25	4,08
BK 5021	1131-690-110-255	RŚ 110	110	255	325	30	25	3,43
BK 5120	1131-690-210-510	RŚD 210	210	255	325	30	25	8,68

1.3.2 ARCING RINGS

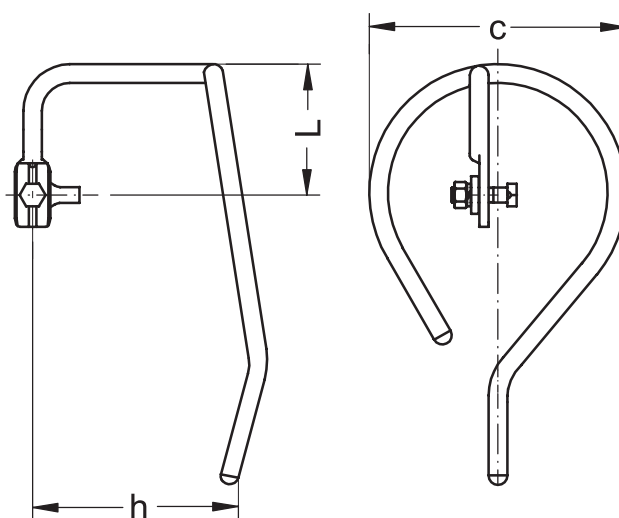


BK 5029 to BK 5031

Catalog No.	KTM	Type	h	Dimensions [mm]			Current-carrying capacity [kA]	Weight [kg]
				L	c	D		
BK 5029	1131-690-227-220	PEDJ 227	227	380	300	30	31,5	4,69
BK 5030	1131-690-170-220	PEDJ 170	170	385	300	60	31,5	4,52
BK 5031	1131-690-240-220	PEDJ 240	240	385	300	60	31,5	4,52



BK 5037

**Material:**

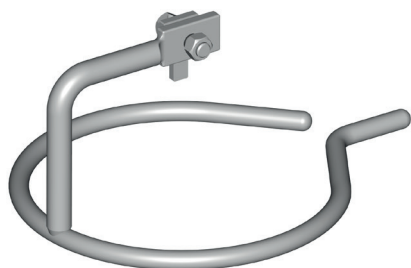
Hot galvanized steel

Applications:

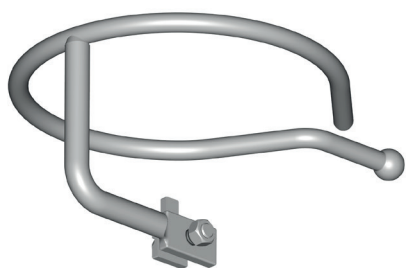
The arcing rings are components of insulator fittings for insulator strings.

Catalog No.	KTM	Type	Dimensions [mm]			Current-carrying capacity [kA]	Weight [kg]
			L	c	h		
BK 5037	1131-690-275-140	PO 275/140	140	275	251	31,5	3,34

1.3.2 ARCING RINGS

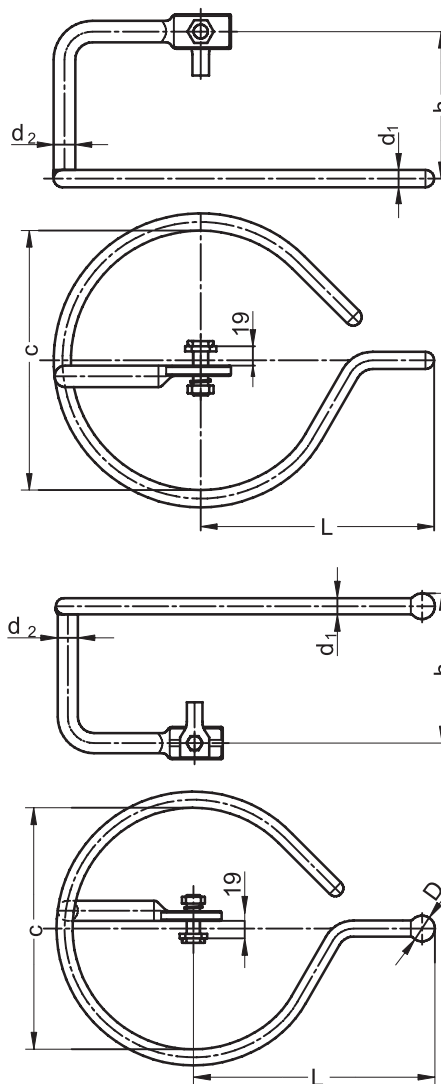


BK 5040, BK 5042



BK 5041, BK 5043

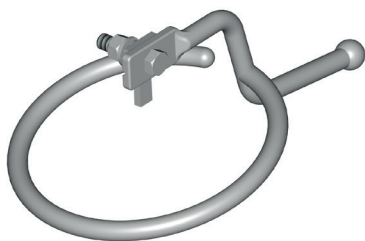
Material:
Hot galvanized steel



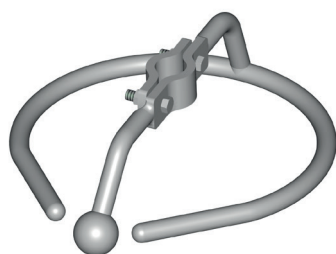
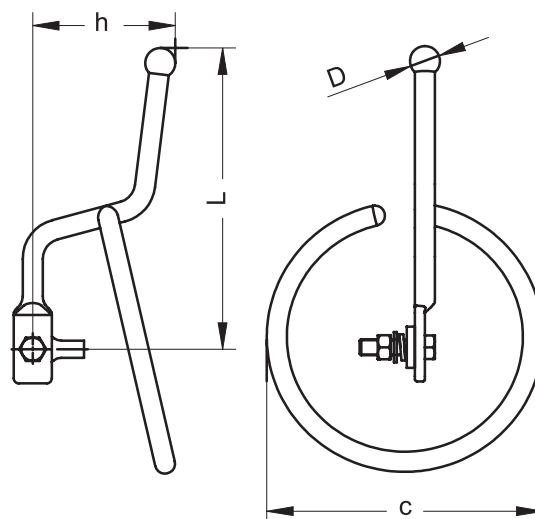
Applications:
The arcing rings are components of insulator fittings for insulator strings.

Catalog No.	KTM	Type	Dimensions [mm]						Current-carrying capacity [kA]	Weight [kg]
			h	L	c	D	d ₁	d ₂		
BK 5040	1131-690-180-270	PO 300/180/270	180	270	300	-	20	25	40	4,10
BK 5041	1131-690-185-300	PO 300/185/300	185	300	300	32	20	25	40	4,20
BK 5042	1131-690-230-270	PO 300/230/270	230	270	300	-	20	25	40	4,25
BK 5043	1131-690-235-300	PO 300/235/300	235	300	300	32	20	25	40	4,40

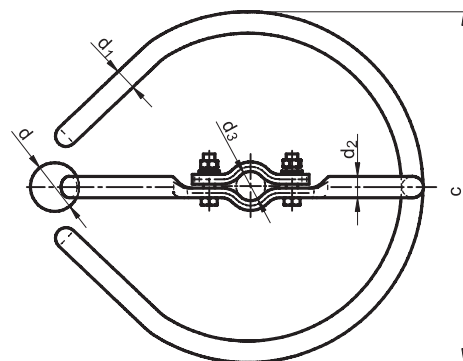
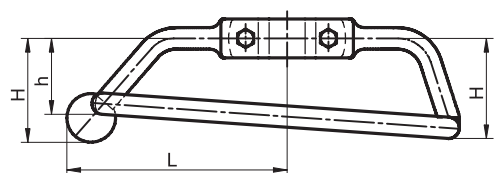
1.3.2 ARCING RINGS



BK 5033



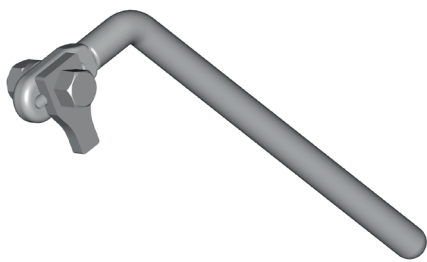
BK 5036 to BK 5038

**Material:***Hot galvanized steel***Applications:***The arcing rings are components of insulator fittings for insulator strings.*

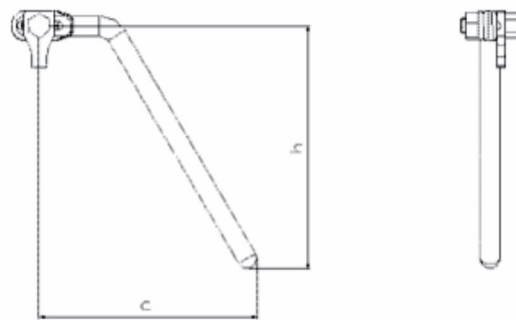
Catalog No.	KTM	Type	Dimensions [mm]				Current-carrying capacity [kA]	Weight [kg]
			h	L	c	D		
BK 5033	1131-690-142-300	PO 142/300	142	300	275	30	31,5	3,06

Catalog No.	KTM	Type	Dimensions [mm]								Current-carrying capacity [kA]	Weight [kg]
			c	H	h	L	d	d ₁	d ₂	d ₃		
BK 5036	1131-690-360-035	PO100/360/35	360	100	75	220	50	22	22	35	30	5,31
BK 5038	1131-690-360-030	PO100/360/30	360	100	75	220	50	22	22	30	30	5,28

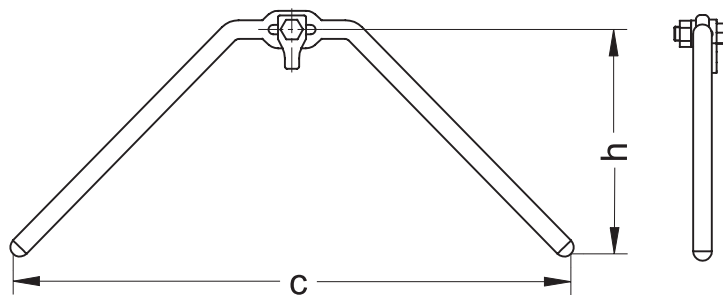
1.3.3 UPPER ARCING HORNS



BK 5032

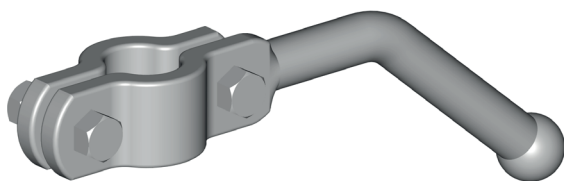


BK 5131

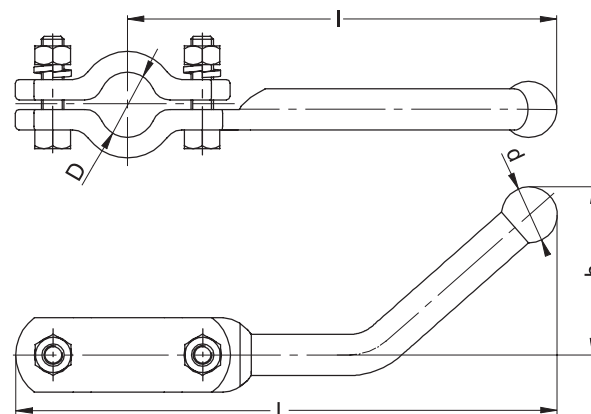
**Material:***Hot galvanized steel***Applications:***The upper arcing horns are components of insulator fittings for insulator strings.*

Catalog No.	KTM	Type	Dimensions [mm]		Current-carrying capacity [kA]	Weight [kg]
			h	c		
BK 5032	1131-690-240-300	RG 240/300	240	300	25	1,8
BK 5131	1131-690-240-600	RG 240/600	240	600	40	2,94

1.3.4 ARCING HORNS

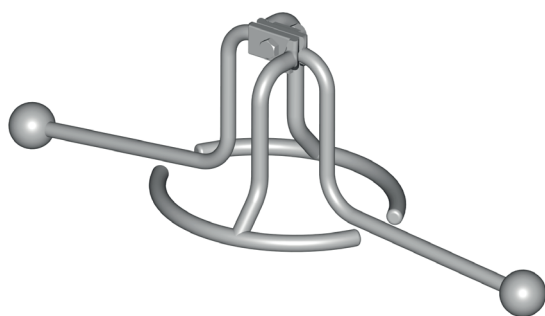


BK 5000 and BK 5001

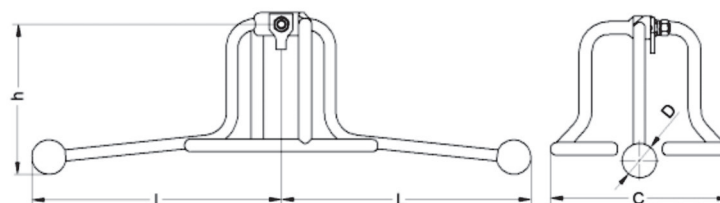
Material:*Hot galvanized steel***Applications:***Rożki ochronne są elementem wyposażenia ochronnego łańcuchów izolatorowych.*

Catalog No.	KTM	Type	D	Dimensions [mm]				Current-carrying capacity [kA]	Weight [kg]
				d	L	l	h		
BK 5000	1131-690-030-290	RO 30/290	30	30	290	230	60	25	2,00
BK 5001	1131-690-035-290	RO 35/290	35	30	290	230	90	25	2,00

1.3.5 TWO-SIDED INSULATOR FITTINGS

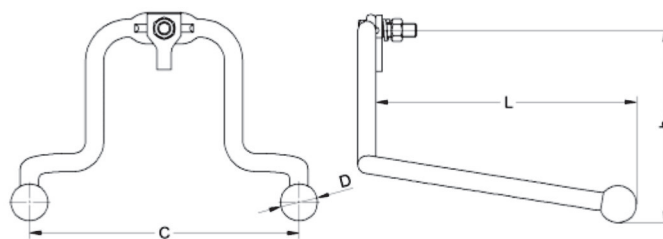
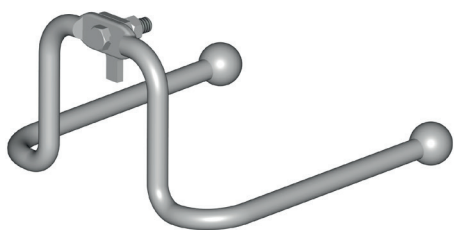


BK 5121 and BK 5130

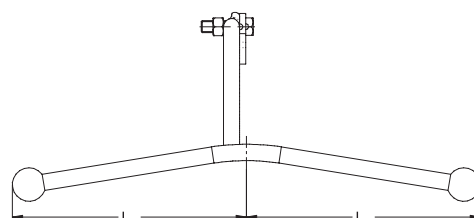
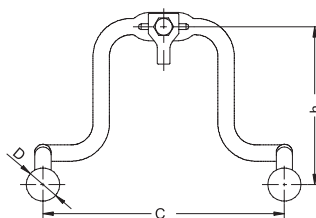
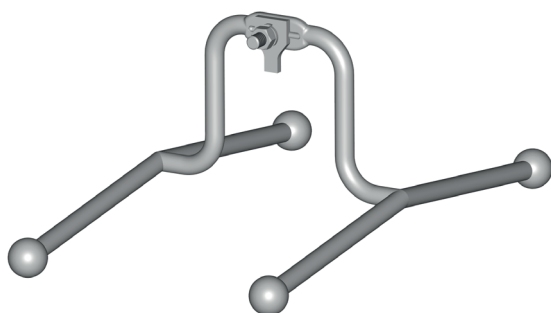
Material:*Hot galvanized steel***Applications:***The two-sided fittings are components of insulator fittings for insulator strings.*

Catalog No.	KTM	Type	h	Dimensions [mm]			Current-carrying capacity [kA]	Weight [kg]
				L	c	D		
BK 5121	1131-690-170-385	PEDD 170	170	385	300	60	31,5	9,35
BK 5130	1131-690-240-385	PEDD 240	240	385	300	60	31,5	9,35

1.3.6 UPPER ARCING HORNS SINGLE-SIDED AND TWO-SIDED



BK 5010 and BK 5011



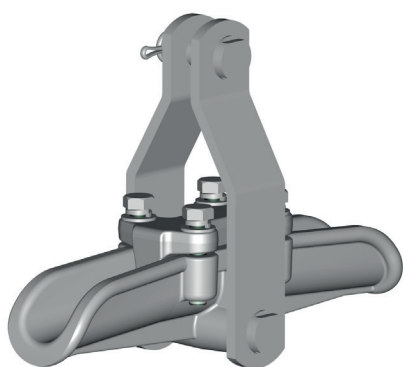
BK 5110 and BK 5111

Material:*Hot galvanized steel***Applications:***The upper arcing horns are components of insulator fittings for insulator strings.*

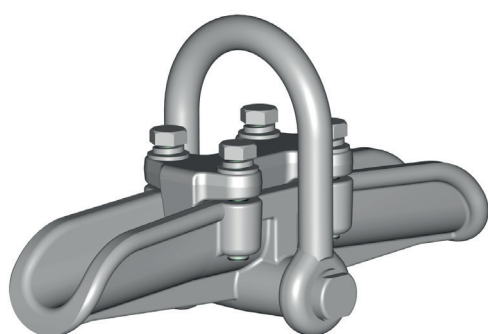
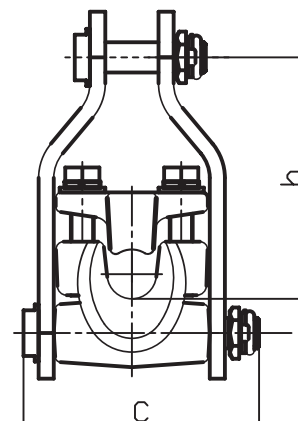
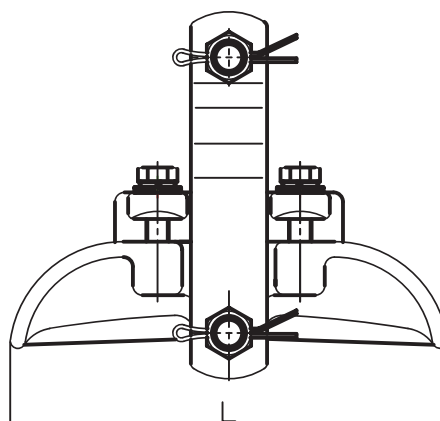
Catalog No.	KTM	Type	Dimensions [mm]				Current-carrying capacity [kA]	Weight [kg]
			h	L	c	D		
BK 5010	1131-690-165-220	RGJ 165	165	315	325	45	31,5	4,52
BK 5011	1131-690-235-220	RGJ 235	235	315	325	45	31,5	4,52
BK 5110	1131-690-165-630	RGD 165	165	315	325	45	31,5	6,70
BK 5111	1131-690-235-630	RGD 235	235	315	325	45	31,5	6,70

1.4 CLAMPS AND SPLICES

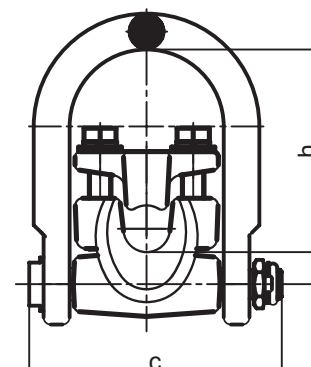
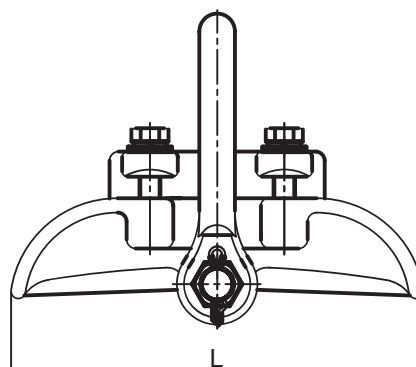
1.4.1 SUSPENSION CLAMPS



BK 3000/1,
BK 3011/1, BK 3012/1



BK 3008/1,
BK 3010/1, BK 3013/1



Material:

Hot galvanized steel
Aluminum casting

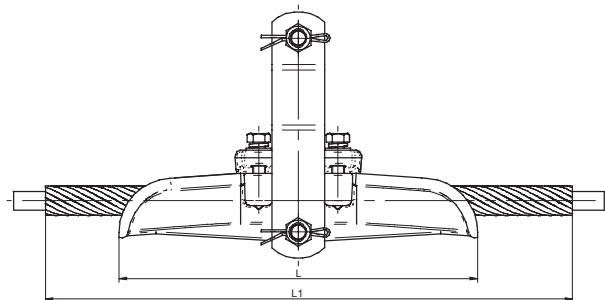
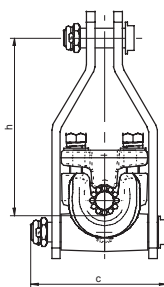
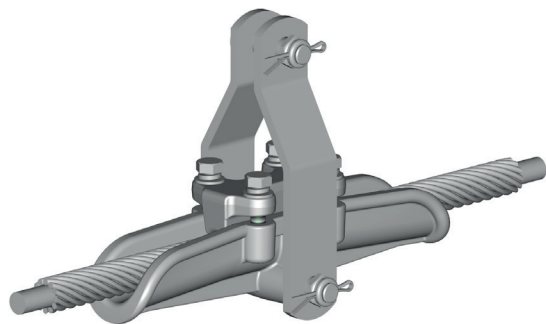
Applications:

The suspension clamps are designed to mount overhead line conductors.

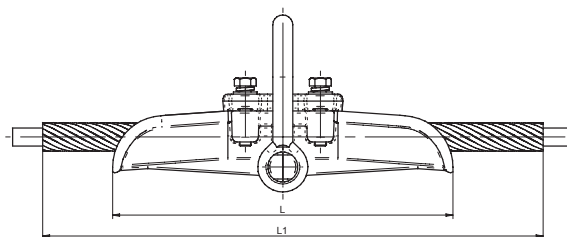
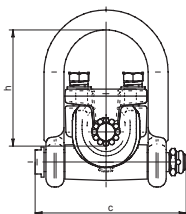
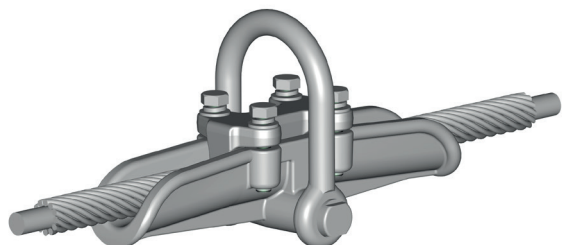
Dimensions [mm]

Catalog No.	KTM	Type	Dimensions [mm]			Conductor diameter [mm]	Weight [kg]
			L	h	c		
BK 3000/1	1131-690-006-070	UPWC 6-70	180	95	110	8 - 14	1,7
BK 3008/1	1131-691-006-070	UPWK 6-70	180	80	119	8 - 14	1,5
BK 3010/1	1131-691-006-240	UPWK 6-240	230	113	144	20 - 27	2,8
BK 3011/1	1131-690-006-240	UPWC 6-240 UPWC 8-350	230	127	127	20 - 27	2,85
BK 3012/1	1131-690-006-120	UPWC 6-120	220	112	122	14 - 20	2,3
BK 3013/1	1131-691-006-120	UPWK 6-120	220	99	144	14 - 20	2,3

1.4.1 SUSPENSION CLAMPS



BK 3050 and BK 3051



BK 3052

Material:

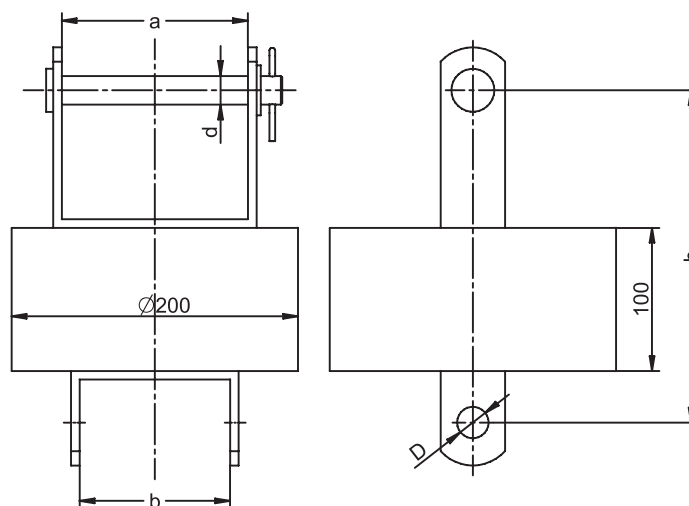
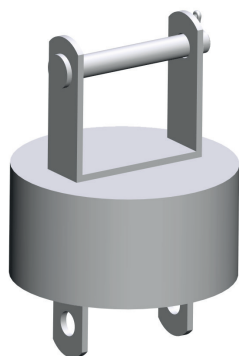
Hot galvanized steel
Aluminum casting

Applications:

The suspension clamps are designed to mount overhead HTLS line conductors.

Catalog No.	KTM	Type	Dimensions [mm]				Weight [kg]
			L	L ₁	h	c	
BK 3050	1114-291-190-300	UPWC HAWK ACSS/TW z oplotem	300	1930	140	150	5,50
BK 3051	1114-291-180-250	UPWC BRANT ACSS/TW z oplotem	250	1730	132	130	4,34
BK 3052	1114-292-140-300	UPWK HAWK ACSS/TW z oplotem	300	1930	130	185	4,8

1.4.2 COUNTERWEIGHT

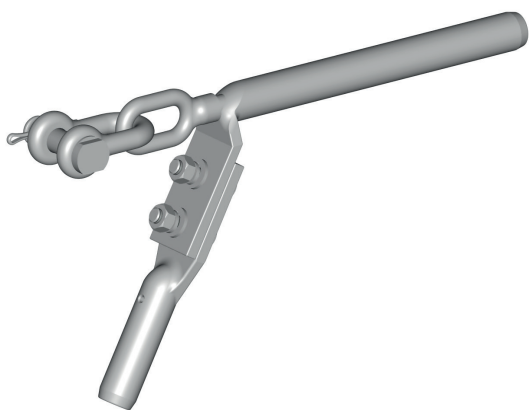


BK 3009 and BK 3009/1

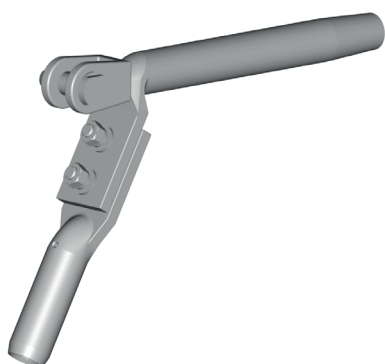
Material:*Hot galvanized steel***Applications:***The weight is a component designed to stabilize the suspension clamps.*

Catalog No.	KTM	Dimensions [mm]					Weight [kg]
		a	b	h	d	D	
BK 3009	1131-690-200-100	120	105	234	20	22	27
BK 3009/1	1131-690-200-130	130	105	234	20	22	27,2

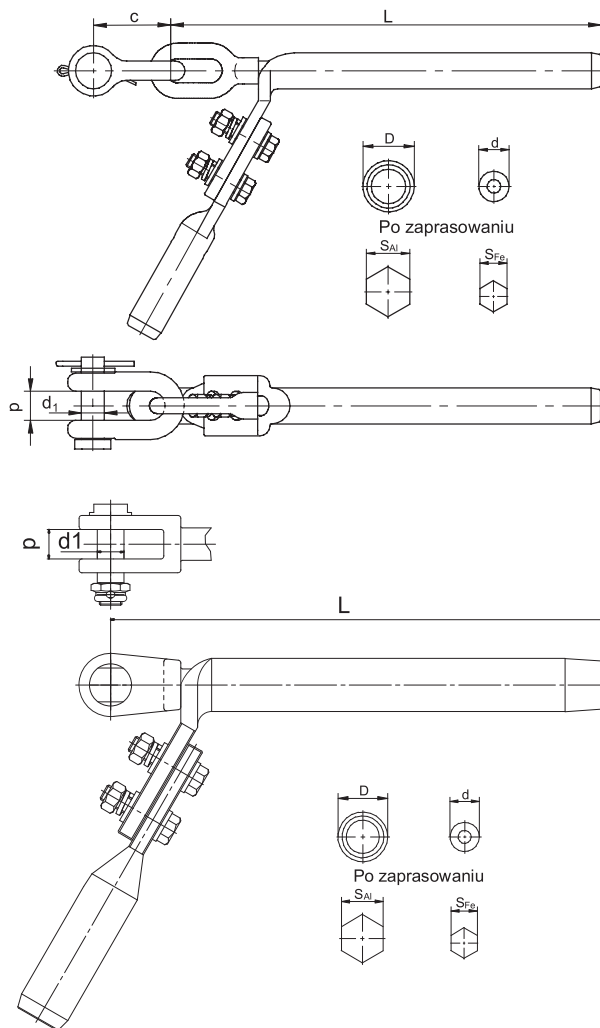
1.4.3 COMPRESSION ANCHOR CLAMPS AND SUBSTATION ANCHOR CLAMPS



BK 3100 to BK 3110,
BK 3123, BK 3139, BK 3140



BK 3111
BK 3121, BK 3130



Material:

Hot galvanized steel
Aluminium

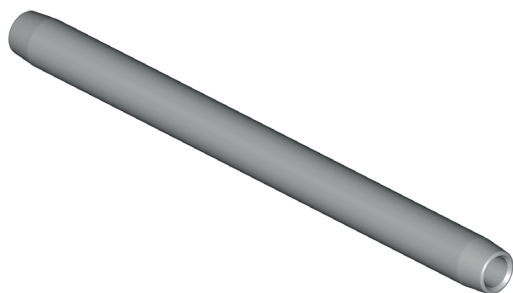
Applications:

The compression anchor clamps are designed to mount the overhead line conductors.

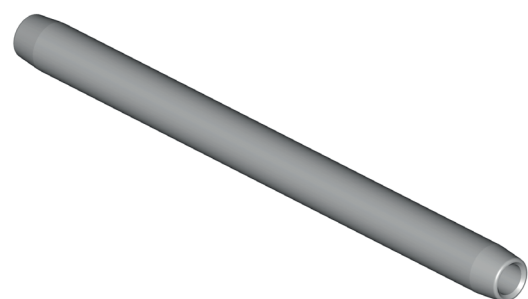
Catalog No.	KTM	Type	Dimensions [mm]								For conductors	Weight [kg]
			L	c	d ₁	p	d	D	S _{Al}	S _{Fe}		
BK 3100	1131-691-263-260	UOZ 26/320	320	60	16	21	10,2	26	22	8,5	AFL 6-70	1,58
BK 3100/1	1131-691-260-263	UOZ 26/320/1	320	60	20	21	10,2	26	22	8,5	AFL 6-70	1,58
BK 3101	1131-691-303-556	UOZ 30/355	355	60	20	21	14,2	30	26	11,5	AFL 6-120	2,41
BK 3104	1131-691-263-220	UOZ 26/320/20	320	60	20	21	14,2	26	22	11,5	AFL 1,7-50	1,77
BK 3105	1131-691-303-260	UOZ 30/320	320	60	20	21	17,2	30	26	14,5	AFL 1,7-70	2,80
BK 3106	1131-691-383-460	UOZ 38/340	340	60	20	21	22,2	38	33	19	AFL 1,7-95	4,22
BK 3109	1131-691-383-806	UOZ 38/380	380	60	20	21	17,2	38	33	14,5	AFL 6-185	2,54
BK 3110	1131-691-383-856	UOZ 38/385	385	60	20	21	22,2	38	33	19	AFL 6-240	2,65
BK 3111	1131-691-383-507	UOZ 38/350	355	-	19	21	22,2	38	33	19	AFL 6-240	3,27
BK 3121	1131-691-484-257	UOZ 48/425 *	425	70	20	21	22,2	48	42	19	AFL 8-350	5,18
BK 3123	1131-691-384-406	UOZ 38/440	440	60	20	21	17,2	38	33	14,5	AFLs 10-300	3,01
BK 3130	1131-691-554-858	UOZ 55/485 *	485	80	22	21	26,2	55	48	22	AFL 8-525	5,96
BK 3139	1131-691-384-156	UOZs 38/415	415	60	20	21	17,2	38	33	14,5	AFLs 10-240	2,34
BK 3140	1131-691-383-775	UOZs 38/370	370	75	22	21	-	38	33	-	AFL 6-240	3,36

* - wyrób w opracowaniu –prosimy o kontakt telefoniczny (34) 313 07 77 do 80

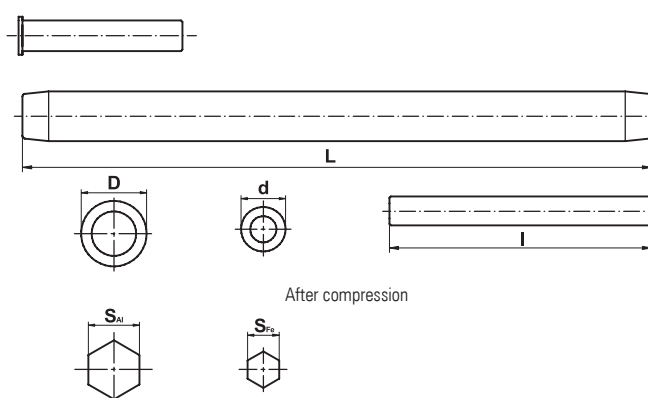
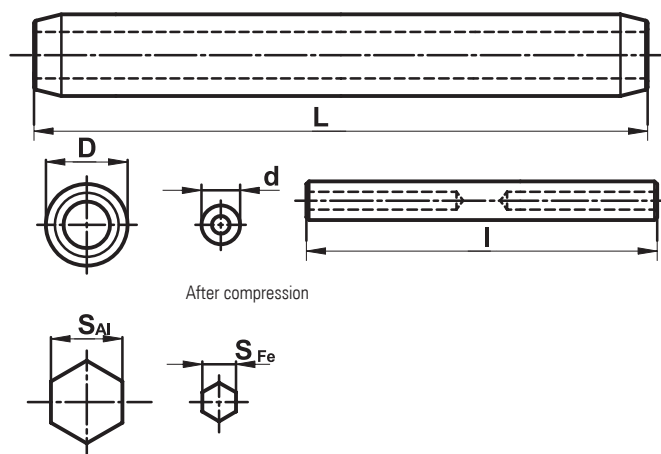
1.4.4 COMPRESSION SPLICES



BK 3170 to BK 3197



BK 3162 to BK 3164

**Material:**

Outer bush - aluminum

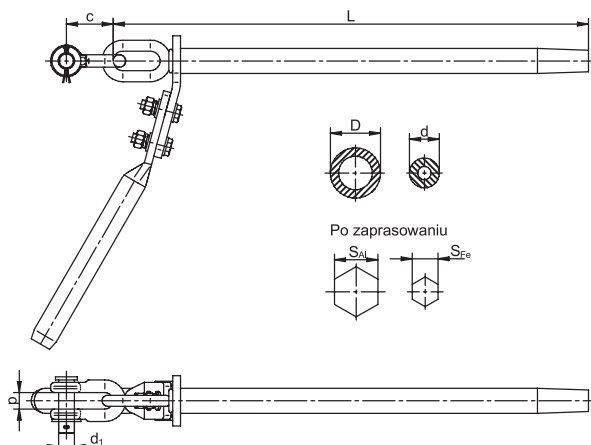
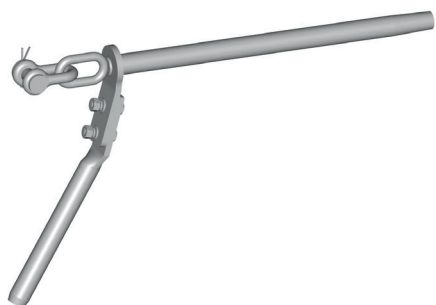
Inner bush - hot galvanized steel

Applications:

The compression splices are designed to connect two segments of the AFL and AFLs conductors of the same diameter.

Catalog No.	KTM	Type	Dimensions [mm]							Weight [kg]
			D	d	L	l	S _{Al}	S _{Fe}		
BK 3170	1131-613-010-300	ZZAFLs 10-300	38	17,2	630	210	33	14,5	2,66	
BK 3171	1131-613-010-240	ZZAFLs 10-240	38	17,2	600	170	33	14,5	1,46	
BK 3184	1131-613-006-070	ZZAFL 6-70	26	10,2	350	125	22	8,5	0,46	
BK 3188	1131-613-006-120	ZZAFL 6-120	30	14,2	500	185	26	11,5	0,77	
BK 3191	1131-613-006-185	ZZAFL 6-185	38	17,2	600	200	33	14,5	1,57	
BK 3193	1131-613-006-240	ZZAFL 6-240	38	22,2	600	235	33	19	1,71	
BK 3196	1131-613-008-350	ZZAFL 8-350	48	22,2	630	210	42	19	1,94	
BK 3197	1131-613-008-400	ZZAFL 8-400	48	26,2	750	240	42	22	3,10	
BK 3162	1131-613-017-050	ZAF 1,7-50	26	14,2	350	160	22	11,5	0,56	
BK 3163	1131-613-017-070	ZAF 1,7-70	30	17,2	410	180	26	14,5	0,87	
BK 3164	1131-613-017-095	ZAF 1,7-95	38	22,2	480	200	33	19	1,61	

1.4.5 COMPRESSION ANCHOR CLAMPS FOR HTLS CONDUCTORS



BK 3150 and BK 3151

Material:

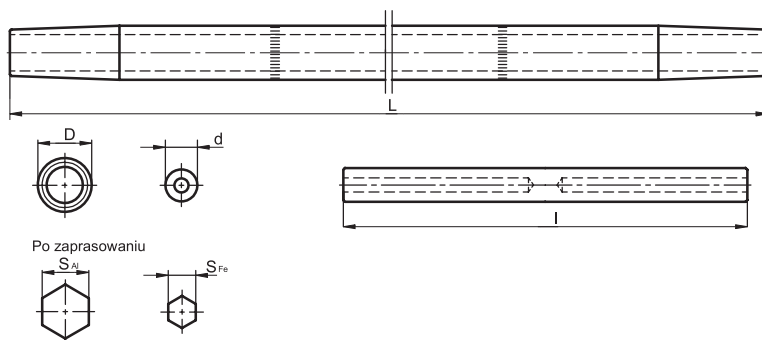
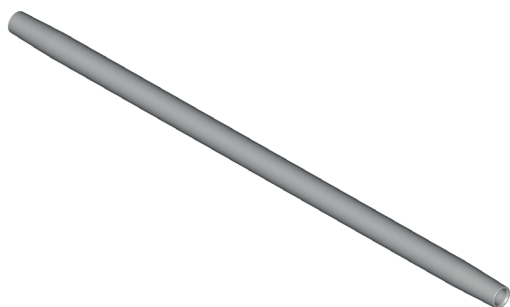
Hot dip galvanized steel
Aluminium

Applications:

The compression anchor clamps are designed to anchor the HAWK ACSS/TW conductors.

Catalog No.	KTM	Type	Dimensions [mm]							Weight [kg]	
			L	c	d ₁	p	d	D	S _{Al}	S _{Fe}	
BK 3150	1114-291-020-530	UOZ HAWK ACSS/TW	606	60	20	21	19	32	27,5	17	
BK 3151	1114-291-179-480	UOZ BRANT ACSS/TW	556	60	20	21	17	32	27,5	14,5	

1.4.6 COMPRESSION SPLICES FOR HTLS CONDUCTORS



BK 3075 and BK 3076

Material:

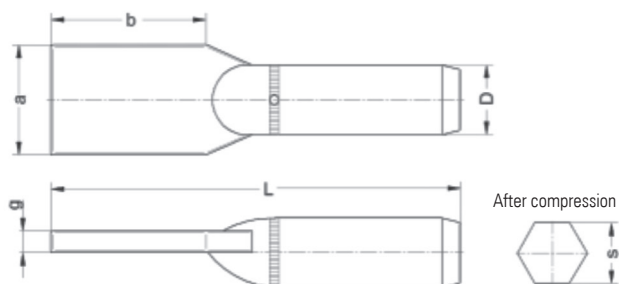
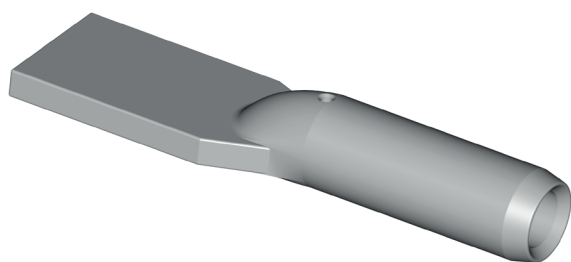
Outer bush - aluminium
Inner bush - hot galvanized steel

Applications:

The compression splices are designed to connect two segments of the ACSS/TW conductors of the same diameter.

Catalog No.	KTM	Type	Dimensions [mm]							Weight [kg]	
			D	d	L	I	S _{Al}	S _{Fe}	S _{Al}	S _{Fe}	
BK 3075	1131-291-900-032	Z HAWK ACSS/TW	32	19	900	240	27,5	17	1,46		
BK 3076	1131-291-780-032	Z BRANT ACSS/TW	32	17	780	210	27,5	14,5	1,23		

1.4.7 COMPRESSION LUGS



BK 3500 to BK 3509

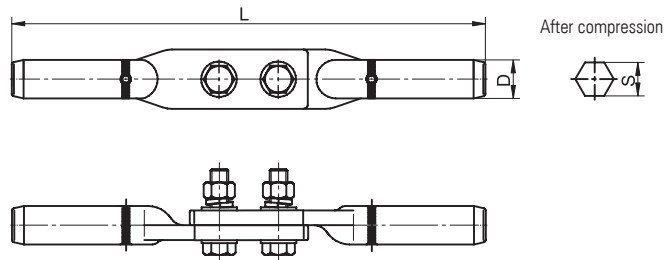
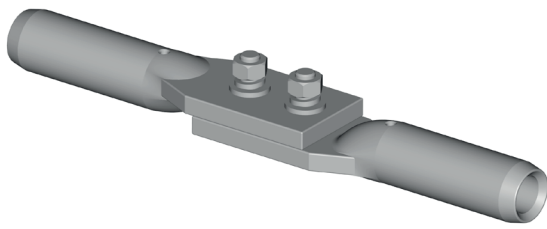
Material:
Aluminium

Applications:

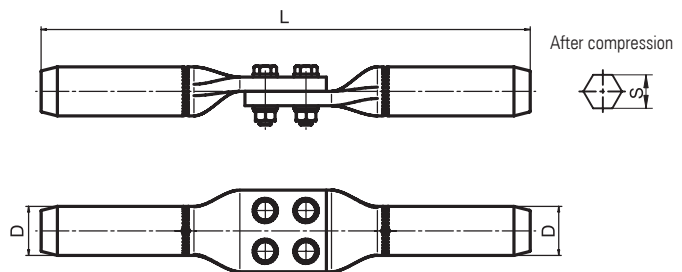
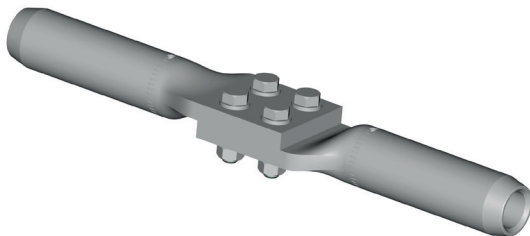
The lugs are compression components designed to mount overhead line conductors.

Catalog No.	KTM	Type	Dimensions [mm]						Weight [kg]
			L	a	b	D	g	s	
BK 3500	1115-810-040-200	AFL 6-70	200	40	80	26	10	22	0,24
BK 3501	1115-810-050-205	AFL 6-120	205	50	80	30	10	26	0,26
BK 3502	1115-810-080-260	AFL 6-120s	260	80	130	30	10	26	0,49
BK 3503	1115-810-060-230	AFL 6-240	230	60	80	38	12	33	0,44
BK 3504	1115-810-100-280	AFL 6-240s	280	100	130	38	12	33	0,56
BK 3505	1115-810-500-205	AFL 1,7-70	205	50	80	30	10	26	0,30
BK 3506	1115-810-060-210	AFL 1,7-95	210	60	80	38	12	33	0,48
BK 3507	1115-810-060-220	AFL 6-185	220	60	80	38	12	33	0,48
BK 3508	1115-810-080-350	AFL 8-350	280	80	80	48	14	42	0,88
BK 3509	1115-810-080-400	AFL 8-400	280	80	80	48	14	42	0,86

1.4.8 COMPRESSION LUG SETS



BK 3703 to BK 3709

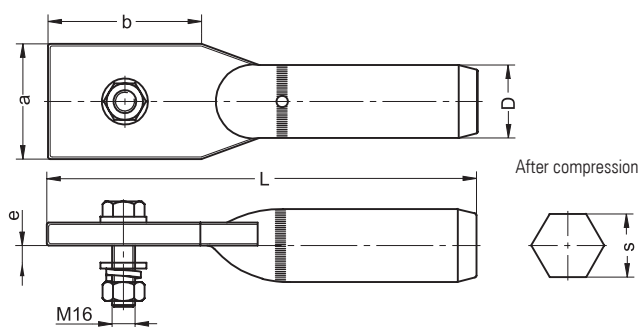
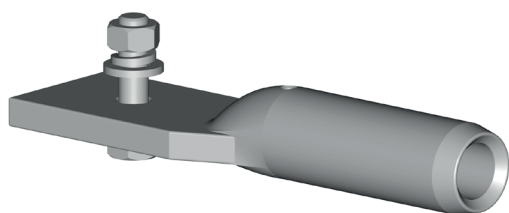


BK 3710 to BK 3714

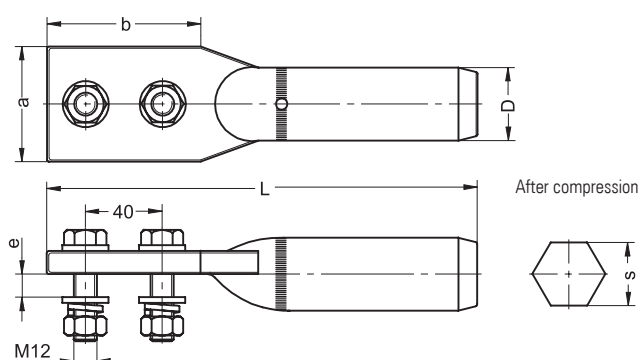
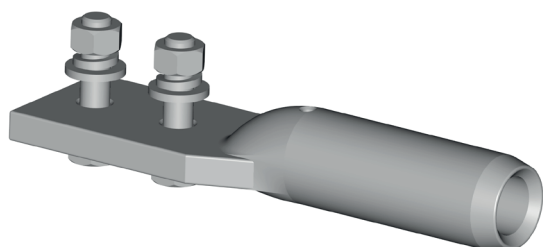
Material:*Aluminium**Joint segments - hot galvanized steel***Applications:***The lugs are compression components designed to mount overhead line conductors.*

Catalog No.	KTM	Type	Dimensions [mm]			Weight [kg]
			D	L	s	
BK 3703	1115-810-306-070	Z2 AFL 6-70	26	320	22	0,64
BK 3705	1115-810-306-120	Z2 AFL 6-120	30	340	26	0,71
BK 3707	1115-810-306-185	Z2 AFL 6-185	38	360	33	1,10
BK 3708	1115-810-306-240	Z2 AFL 6-240	38	380	33	1,06
BK 3709	1115-810-310-240	Z2 AFL 10-240	38	380	33	0,96
BK 3710	1115-810-308-525	Z4 AFL 8-525	55	430	48	2,26
BK 3713	1115-810-308-400	Z4 AFL 8-400	48	480	42	2,08
BK 3714	1115-810-308-350	Z4 AFL 8-350	48	480	42	2,12

1.4.9 COMPRESSION LUG SETS



BK 3604 to BK 3606



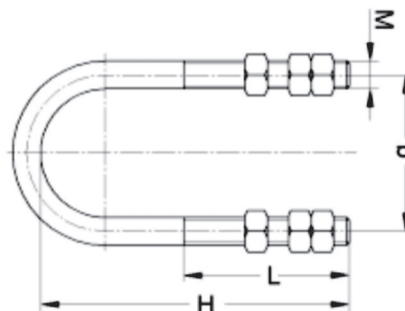
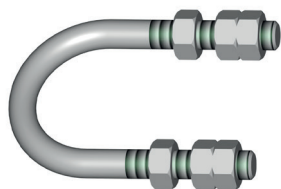
BK 3610 to BK 3615

Material:*Aluminium**Joint segments - hot galvanized steel***Applications:***The lugs are compression components designed to mount overhead line conductors.*

Catalog No.	KTM	Type	Dimensions [mm]						Weight [kg]
			L	a	b	D	e	s	
BK 3604	1115-810-140-200	AFL 1,7-50/1xM16	200	40	80	26	11	22	0,37
BK 3605	1115-810-150-205	AFL 1,7-70/1xM16	205	50	80	30	11	26	0,45
BK 3606	1115-810-160-205	AFL 1,7-95/1xM16	205	60	80	38	11	33	0,69
BK 3610	1115-810-240-200	AFL 1,7-50/2xM12	200	40	80	26	15	22	0,41
BK 3611	1115-810-205-250	AFL 1,7-70/2xM12	205	50	80	30	15	26	0,42
BK 3612	1115-810-260-205	AFL 1,7-95/2xM12	205	60	80	38	13	33	0,48
BK 3614	1115-810-250-205	AFL 6-120/2xM12	205	50	80	30	13	26	0,45
BK 3615	1115-810-260-230	AFL 6-240/2xM12	230	60	80	38	10	33	0,62

1.5 TOWER ATTACHMENTS

1.5.1 UNIVERSAL U-BOLT HANGER



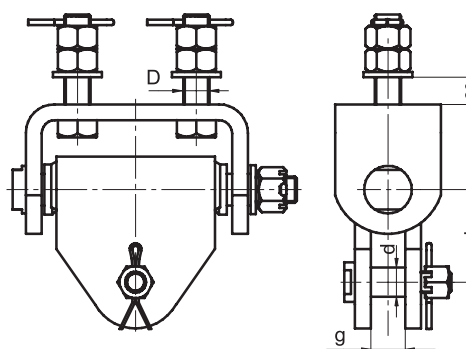
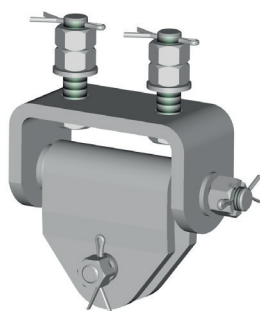
BK 8000 to BK 8005

Material:
Hot galvanized steel

Applications:
The universal U-bolt hanger is designed for installation of insulator strings on various bearing structures.

Catalog No.	KTM	Type	Dimensions [mm]				Breaking load [kN]	Current-carrying capacity [kA]	Weight [kg]
			M	L	H	a			
BK 8000	1131-690-016-140	M16 - 140	M16	75	140	90	100	16	0,78
BK 8001	1131-690-016-200	M16 - 200	M16	130	200	90	100	16	0,97
BK 8002	1131-690-020-130	M20 - 130	M20	75	130	90	120	25	1,28
BK 8003	1131-690-020-135	M20 - 135	M20	70	135	90	120	25	1,30
BK 8004	1131-690-020-195	M20 - 195	M20	130	195	90	120	25	1,60
BK 8005	1131-650-020-145	M20 - 145	M20	80	145	90	120	25	1,35

1.5.2 COMPLETE HANGER



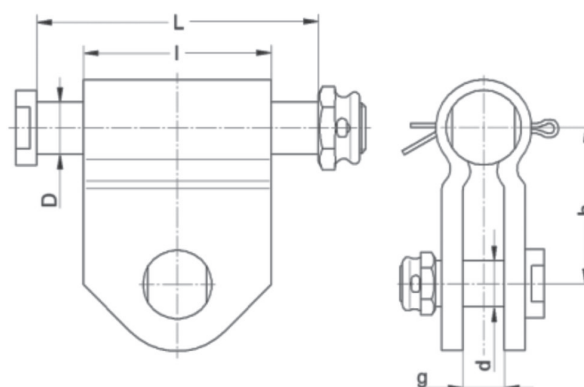
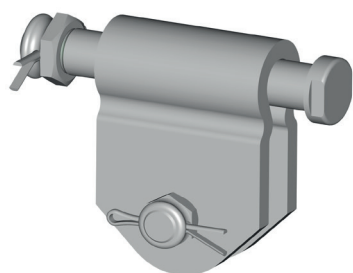
BK 8007 and BK 8008

Material:
Hot galvanized steel

Applications:
The complete hanger is designed for installation of insulator strings on various bearing structures.

Catalog No.	KTM	Type	Dimensions [mm]						Breaking load [kN]	Current-carrying capacity [kA]
			L	d	D	h	c	g		
BK 8007	1131-690-144-020	W 20/120	90	22	20	70	65	22	120	40
BK 8008	1131_690_144_024	W 24/120	90	22	24	70	65	22	120	40

1.5.3 HANGER

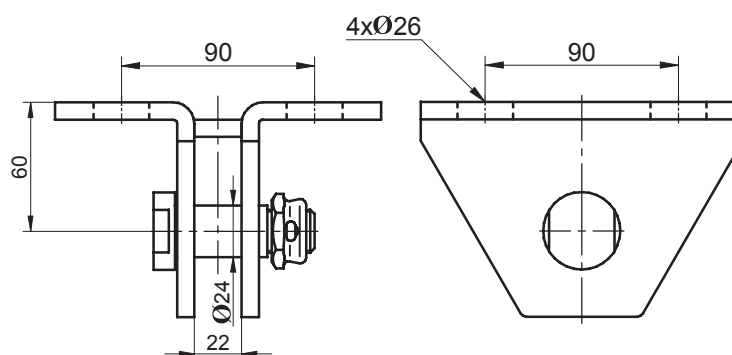
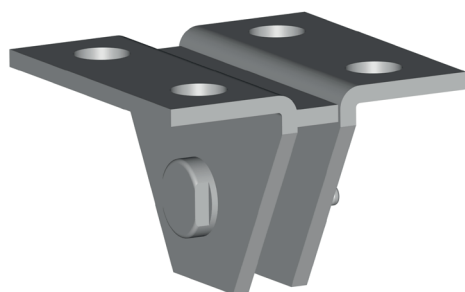


BK 8010 and BK 8011

Material:*Hot galvanized steel***Applications:***The hanger is designed for installation of insulator strings on various bearing structures.*

Catalog No.	KTM	Type	Dimensions [mm]						Breaking load [kN]	Current-carrying capacity [kA]
			L	I	D	h	d	g		
BK 8010	1131-698-199-008	WP 160/25	135	90	25	75	19	20	40	160
BK 8011	1131-698-229-008	WP 230/25	135	90	25	75	22	20	50	230

1.5.4 HANGER WB I



BK 8025

Material:*Hot galvanized steel***Applications:***The hanger WB I is designed to connect insulator strings with various bearing structures.*

Catalog No.	KTM	Type	Breaking load [kN]	Weight [kg]
BK 8025	1131-698-060-120	WB I	120	3,31

- Heating and ventilation of control cabinets
- Fittings and hardware for overhead power lines
- Equipment for transformers
- Earthing systems
- Cable accessories and substation equipment
- Current transformers **NEW!**
- Rectifiers and traction rectifier systems **NEW!**
- Earth fault current compensation systems **NEW!**
- Design and production of various equipment and components

Bezpol

ORT

- Substation MV busbar insulation services.
- Mounting of MV substation busbars.
- Supply of the AFL, AFLs, ACSS, ACSS/TW and OPGW bare and insulated conductors **NEW!**
- Survey, consulting and selection of substation auxiliary power supply transformer's parameters **NEW!**
- Survey, consulting and selection of the substation grounding resistors **NEW!**

- Oil immersed and dry-type inverters
- Cast resin distribution transformers
- Oil immersed and dry-type earthing transformers
- Rectifiers **NEW!**
- Oil immersed and dry-type shunt reactors
- Cathode smoothing reactors **NEW!**
- Oil immersed and dry-type arc-suppression coils
- Current limiting reactors
- Transformer refurbishment services
- Adaptation of transformer voltage for wind power plant needs



TRAFTA

Bezpol

BEZPOL Sp. z o.o.

ul. Partyzantów 21
42 – 300 Myszków

NIP 577-040-07-32
phone. +48 34 313 07 77–80
Sales department . 33, 34
Marketing department .39 or +48 34 313 07 81
Fax 034 313 06 76
bezpol@bezpol.pl

ISO 9001



AC 070
QMS